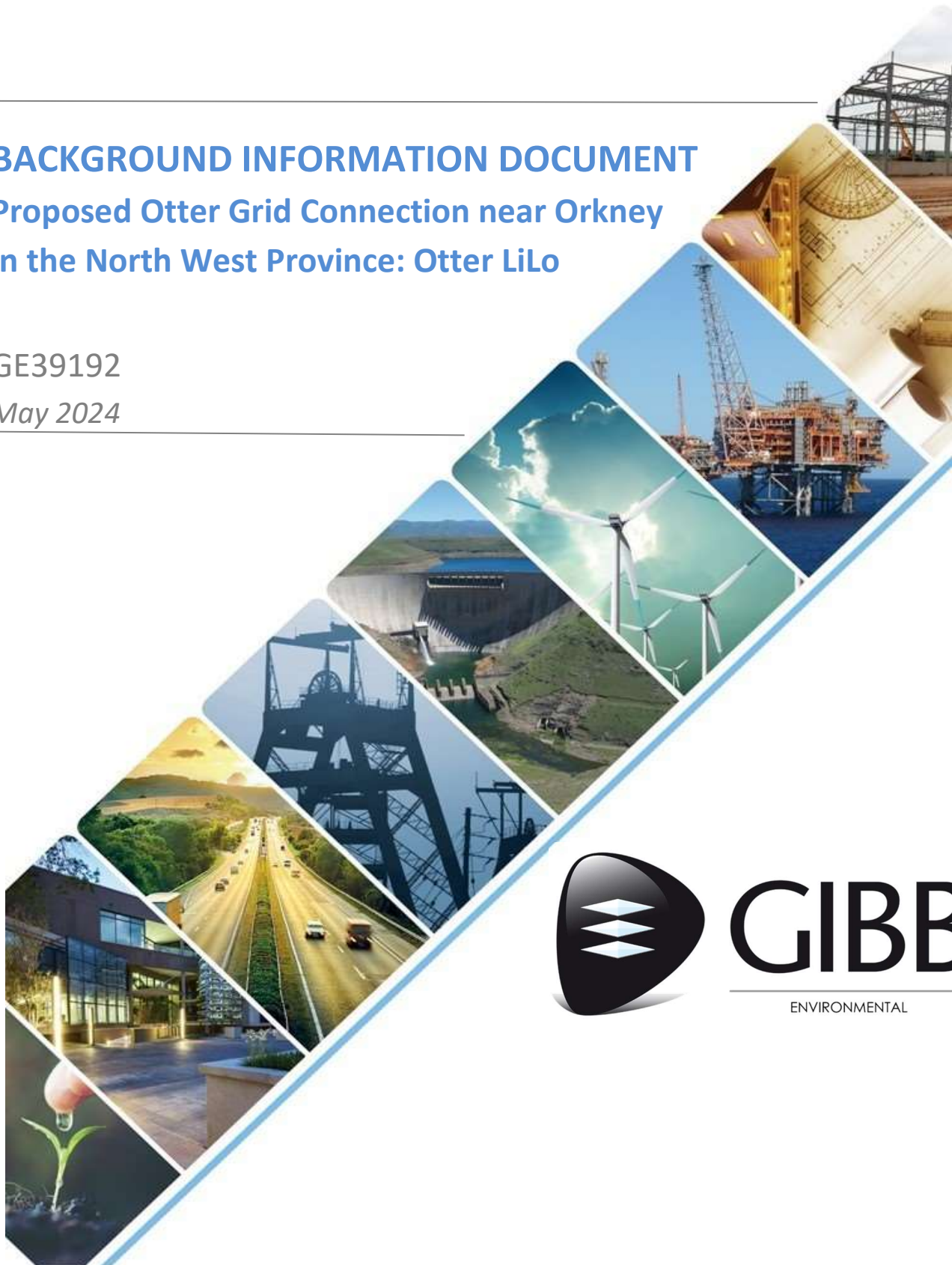

BACKGROUND INFORMATION DOCUMENT
Proposed Otter Grid Connection near Orkney
in the North West Province: Otter LiLo

GE39192
May 2024



GIBB
ENVIRONMENTAL

Abbreviations / Acronyms / Definitions

List of Abbreviations and Acronyms	
BAR	Basic Assessment Report
BID	Background Information Document
DFFE	Department of Forestry, Fisheries and the Environment
EAP	Environmental Assessment Practitioner
EMPr	Environmental Management Programme
EGI	Electricity Grid Infrastructure
GA	General Authorisation
GN	Government Notice
I&APs	Interested and Affected Parties
kV	Kilovolt
LiLo	Loop-in-Loop-out
NEMA	National Environmental Management Act, 1998 (Act No. 107 of 1998)
OHL	Overhead Line
REDZ	Renewable Energy Development Zone

1 Introduction

ABO Energy South Africa (Pty) Ltd, the proponent, intends to develop a proposed Grid Connection Corridor and associated Electricity Grid Infrastructure (EGI) therein to connect the Otter 1 and Otter 2 Solar Energy Facilities to the national electricity grid. The project is known as the proposed 'Otter Grid Connection'. The facilities are located south-west of Orkney in the North West Province. It is proposed that a connection be established between the solar energy facilities and an existing Eskom 400 kV line (Mercury/Mookodi 1), located to the south of the facilities. The Corridor is wholly located within the Klerksdorp Renewable Energy Development Zone (REDZ) as well as within the Central Strategic Transmission Corridor.

The following EGI components will form part of the proposed Grid Connection Corridor:

1. A Main Transmission Substation (MTS) (i.e., a collector / switching / transformation substation) and associated auxiliary buildings (i.e. for control / storage / electrical infrastructure / components) with a total development footprint of up to 15 ha, including but not limited to the construction of a new platform with an earth mat and civil works, as well as new infrastructure such as feeder bay/s, line bay/s, busbar/s, circuit breaker/s, bussection/s, and/or transformer/s, with various protection equipment. There would be a radio mast on top of the structure that would be up to 50 m in height.
2. Up to 2 (two) overhead lines (OHL) connecting the Otter Solar Energy Facilities to the MTS via single / double-circuit of 132 kV capacity, mono pole lines, complete with structures, foundations, conductor, fibre layout, insulation, and assemblies.
3. One Loop-in-Loop-out (LiLo) connection into an existing Eskom 400 kV line, via a single / double-circuit power line of up to 400 kV between the Otter MTS / collector / switching / transformation substation and an Eskom 400 kV line (Mercury/Mookodi 1)

complete with structures, foundations, conductor, fibre layout, insulation, and assemblies.

The proposed Otter Grid Connection including an MTS / collector / switching / transformation substation and associated auxiliary buildings, a 400 kV LiLo connection and up to two OHLs, will be assessed within a corridor approximately 300 m in width. A 250 m wide corridor would be registered.

Each of the above-mentioned components is subject to a separate registration process except for the LiLo which will require an Application for Environmental Authorisation (EA) and follow a Basic Assessment process in terms of the National Environmental Management Act, 1998 (Act No. 107 of 1998) (NEMA) and the Environmental Impact Assessment (EIA) Regulations of 2014 (as amended). This Background Information Document (BID) covers the proposed **Otter LiLo** connection.

GIBB Environmental (Pty) Ltd (GIBB) has been appointed as the independent Environmental Assessment Practitioner (EAP) by the proponent (ABO Energy South Africa (Pty) Ltd) to undertake the required application for EA for the proposed Otter LiLo connection in terms of NEMA, 1998 and the EIA Regulations of 2014 (as amended).

1.1 Purpose of this Background Information Document

This BID will be distributed electronically to all stakeholders identified as potential Interested and Affected Parties (I&AP). The BID will be used to announce the project and provide a high-level overview of the project to stakeholders. The BID is intended to provide stakeholders with sufficient project information for them to decide if they consider themselves to be an I&AP for the project. I&APs are required to register with the EAP (GIBB Environmental) at which point they will be added to the I&AP register (refer to **Section 2.3** for details of how to register).

1.2 Legal Context

Although the proposed Otter LiLo is located within a Strategic Transmission Corridor, the LiLo does not fall within the scope for Registration in terms of the Standard for the Development and Expansion of Power Lines and Substations within Identified Geographical Areas Revision 2 ('the Standard') gazetted under Government Notice (GN) No. 2313 of 27 July 2022. Consequently, a Basic Assessment process will be undertaken to obtain an EA for activities listed by the EIA Regulations, 2014 (as amended). Specific reference is made to listed activities within GN No. 984 (Listing Notice 2) of the EIA Regulations (as amended) which are triggered by the proposed project, and which require an EA prior to commencement (refer to the sub-sections below). Note that a Basic Assessment process is followed for the proposed Otter LiLo connection in terms of GN 145 of 2021, as the Otter LiLo is fully located within the Klerksdorp Renewable Energy Development Zone (REDZ).

1.2.1 Activities Triggered by the Project

The following table outlines triggered activities from Listing Notices in terms the NEMA, 1998. This is a preliminary list and may be refined as the study proceeds.

Table 1: Triggered Listed Activities

Activity No:	Activities as set out in Listing Notice 2	Applicability
9	<i>The development of facilities or infrastructure for the transmission and distribution of electricity with a capacity of 275 kilovolts or more, outside an urban area or industrial complex excluding the development of bypass infrastructure for the transmission and distribution of electricity where such bypass infrastructure is — (a) temporarily required to allow for maintenance of existing infrastructure; (b) 2 kilometres or shorter in length; (c) within an existing transmission line servitude; and will be removed within 18 months of the commencement of development.</i>	The proposed Otter LiLo connection will entail the development of infrastructure for the transmission of electricity outside an urban area. The capacity of the Otter LiLo connection will be up to 400kV which exceeds the 275 kV threshold stipulated by the activity.

1.3 Process and Timeline

The process of applying for an EA, by way of a Basic Assessment process, is outlined in Figure 1 below.

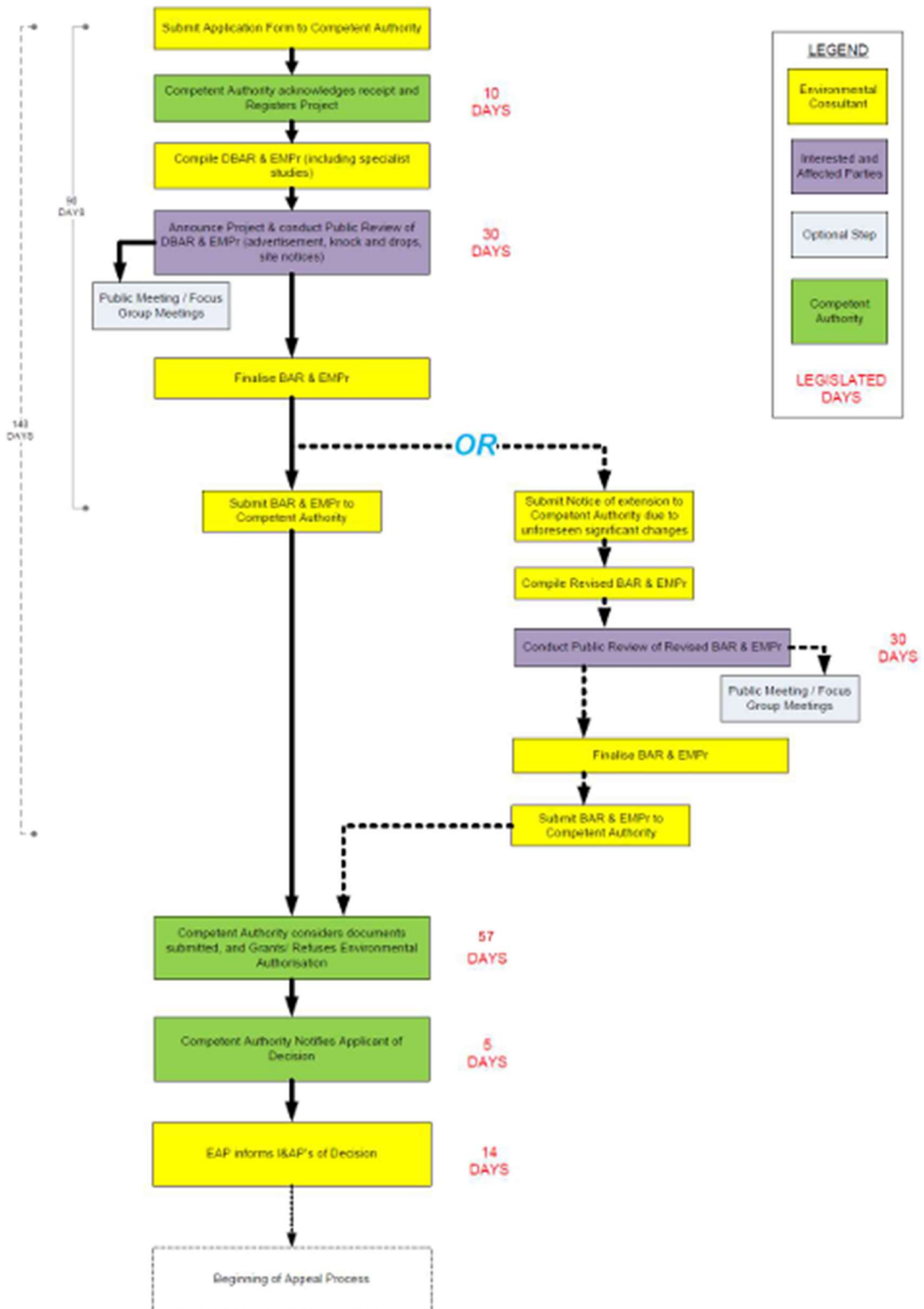


Figure 1: Basic Assessment process flow

2 Background and Project Description

ABO Energy South Africa (Pty) Ltd proposed the development of the proposed Otter LiLo connection which will be an overhead powerline from the proposed Otter MTS to the existing Eskom Mercury/Mookodi 1 400kV overhead line. Otter LiLo will have a capacity of up to 400 kV. Otter Lilo will be located on Remaining Extent of Farm Klerksdrif No. 31, Portion 1 of Farm Klerksdrif No. 31 & Remaining Extent of Portion 5 (a Portion of Portion 1) of The Farm Klerksdrift No. 16. Further details of the Otter LiLo are provided below:

Table 2: Details of Otter LiLo Connection

Name	The proposed Otter LiLo Connection Overhead Powerlines up to 400kV in capacity from the Otter MTS to the existing 400kV Over-head Line.
Location/ affected properties	Remaining Extent of Farm Klerksdrif No. 31 Portion 1 of Farm Klerksdrif No. 31 Remaining Extent of Portion 5 (a Portion of Portion 1) of Farm Klerksdrift No. 16
Connection	Up to 400kV to connect into the existing Mercury/Mookodi 1, 400kV overhead line.
Capacity	Up to 400kV
Length	Two lines up to 1km in length
Height	Up to approximately 60m
Servitude	Up to 55m (noting that a wider corridor of up to 400m will be assessed).
Access	Service Road - There would be a jeep track (up to 4m wide) within the development footprint/ servitude of the line (underneath the line), i.e., a centre line track, where possible.

2.1 Project Location

The proposed Otter LiLo connection would be located south-west of Orkney, North West, within the jurisdiction of the City of Matlosana Local Municipality, within the Dr Kenneth Kaunda District Municipality. The Otter LiLo is wholly located in the Klerksdorp REDZ and the Central Strategic Transmission Corridor. Refer to **Appendix A** for a Locality Map.

Table 3: Otter LiLo approximate GPS location

Point	Latitude	Longitude
Otter LiLo Overhead Line 1		
Start	27° 5'41.97"S	26°29'29.00"E
Mid-point	27° 5'55.91"S	26°29'38.48"E
End	27° 6'9.62"S	26°29'42.20"E
Otter LiLo Overhead Line 2		
Start	27° 5'41.39"S	26°29'30.08"E
Mid-point	27° 5'55.27"S	26°29'39.55"E
End	27° 6'3.81"S	26°29'52.86"E

3 Screening Tool Report

A screening tool report was drawn from the DFFE online screening tool on 24 January 2024. The screening tool report is available in **Appendix B**. The tool identified the following sensitivities where the Otter LiLo connection is proposed.

Table 4: Site environmental sensitivities as identified by the DFFE Screening Tool Report

Theme	Screening Tool Sensitivity Rating	Basic Assessment process approach
Agricultural	Medium	An agricultural specialist has completed the site sensitivity verification.
Animal species	Low	An ecologist has completed the site sensitivity verification.
Aquatic biodiversity	Low	An aquatic ecologist has completed the site sensitivity verification.
Archaeological and cultural heritage theme	Low	An archaeologist has completed the site sensitivity verification.
Civil Aviation	Low	N/A, no specialist study necessary
Defence theme	Low	N/A, no specialist study necessary
Palaeontology	Medium	A specialist has completed the site sensitivity verification.
Plant species	Medium	An ecologist has completed the site sensitivity verification.
Terrestrial biodiversity	Very High	An ecologist has completed the site sensitivity verification

3.1 Specialist Studies

The appointed team of specialists has completed the required site sensitivity verification. The following specialist studies are underway to inform the Basic Assessment process:

- Agricultural Compliance Statement
- Animal Species Compliance Statement
- Terrestrial Biodiversity Compliance Statement
- Aquatic Biodiversity Compliance Statement
- Plant Species Compliance Statement
- Avifauna Impact Assessment
- Landscape and Visual Impact Assessment
- Archaeological and cultural heritage impact assessment

The key findings of these assessments will be incorporated into the Basic Assessment Report (BAR). The draft BAR will be made available for registered I&APs to review and provide comment over a period of 30 days.

4 Public Participation Process

4.1 Registration as an Interested and Affected Party

I&APs will be kept informed as the project progresses and be notified via email when the draft BAR is available for review and comment. Registered I&APs will also be informed of the decision of the Competent Authority on the application, once issued.

Note, by registering as an I&AP you agree to us keeping your personal information in the project database. This contact information will be retained on our servers and will not be shared or used beyond sending out notifications for this project.

4.2 EAP Contact Details

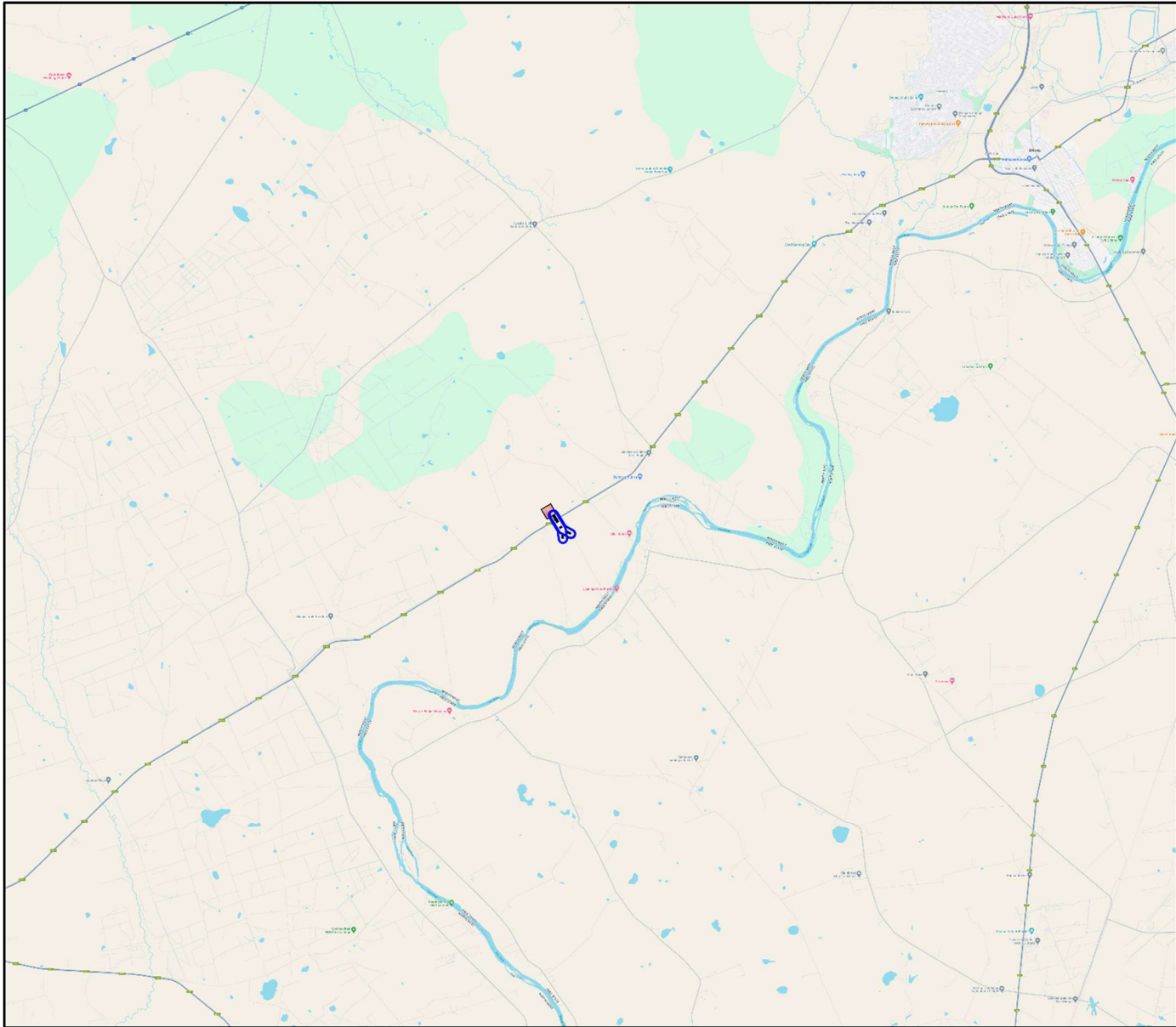
The EAP for the project can be contacted using the following details:

Table 5: EAP Contact Details

Contact name:	GIBB Environmental FAO: Mr Donovan Henning
Tel:	011 781 1730
Email (preferred method of communication):	donavanh@nema.co.za and cc nbrink@gibbenvironmental.co.za
Address	GIBB Environmental 147 Bram Fischer Drive Ferndale, Randburg 2194

Registration requests must be emailed to GIBB Environmental using these contact details above. The registration form is included in **Appendix C**.

Appendix A. Locality Map and Layout Plan



**GE39192
Otter LiLo Connection
Locality Map**



Scale 1:200 000



Legend

Otter LiLo Corridor

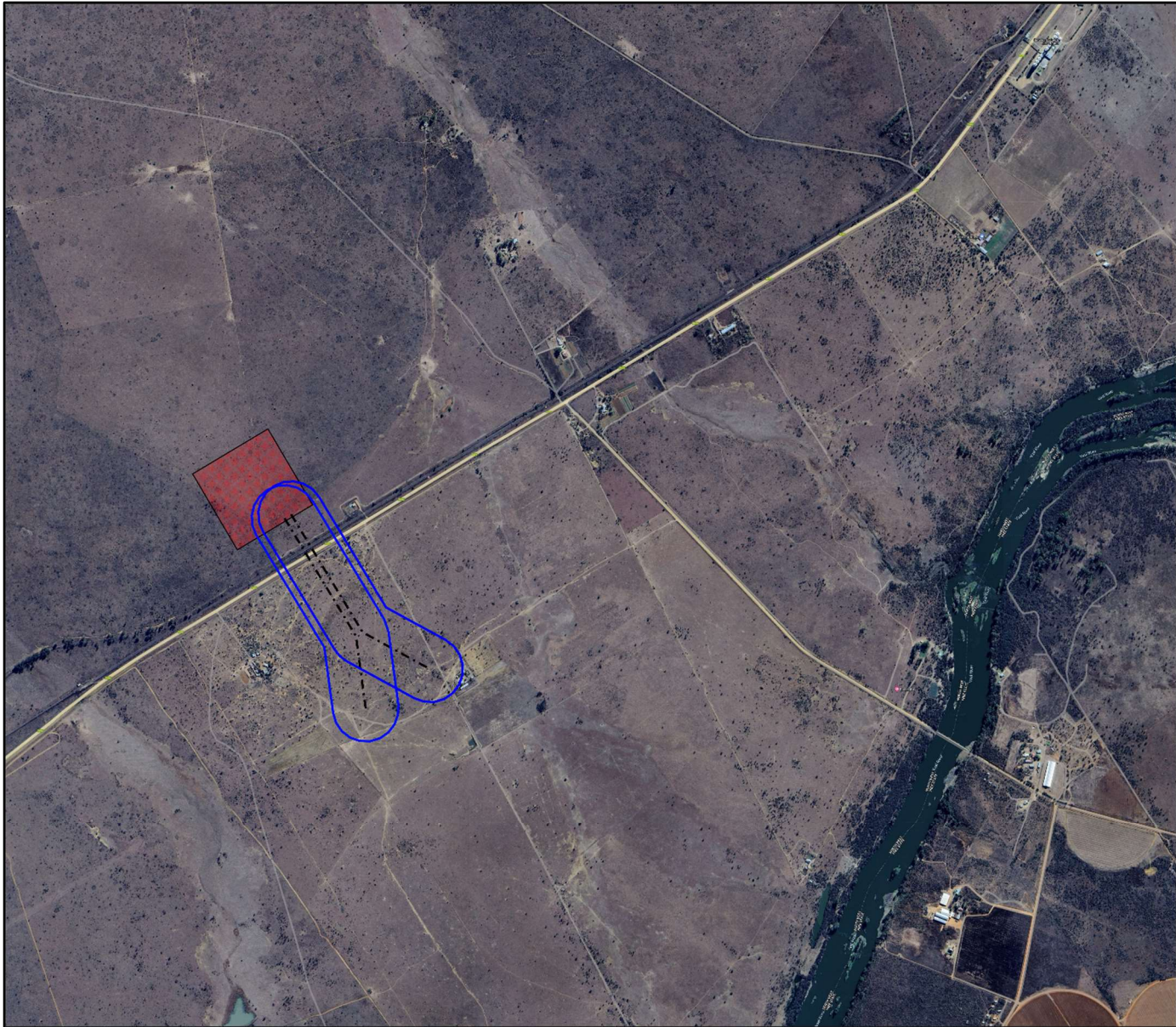


Otter LiLo



Otter MTS





**GE39192
Otter LiLo Connection
Layout Map**



Scale 1:25 000



Legend

Otter LiLo Corridor



Otter LiLo



Otter MTS



Appendix B. Screening Tool Report

**SCREENING REPORT FOR AN ENVIRONMENTAL AUTHORIZATION AS
REQUIRED BY THE 2014 EIA REGULATIONS – PROPOSED SITE
ENVIRONMENTAL SENSITIVITY**

EIA Reference number: Pending

Project name: Otter LiLo

Project title: The proposed Otter LiLo Connection Overhead Powerlines up to 400kV in capacity from the Otter MTS to the existing 400kV Overhead Line

Date screening report generated: 25/01/2024 08:43:52

Applicant: ABO Wind renewable energies (Pty) Ltd

Compiler: Kate Flood

Compiler signature:



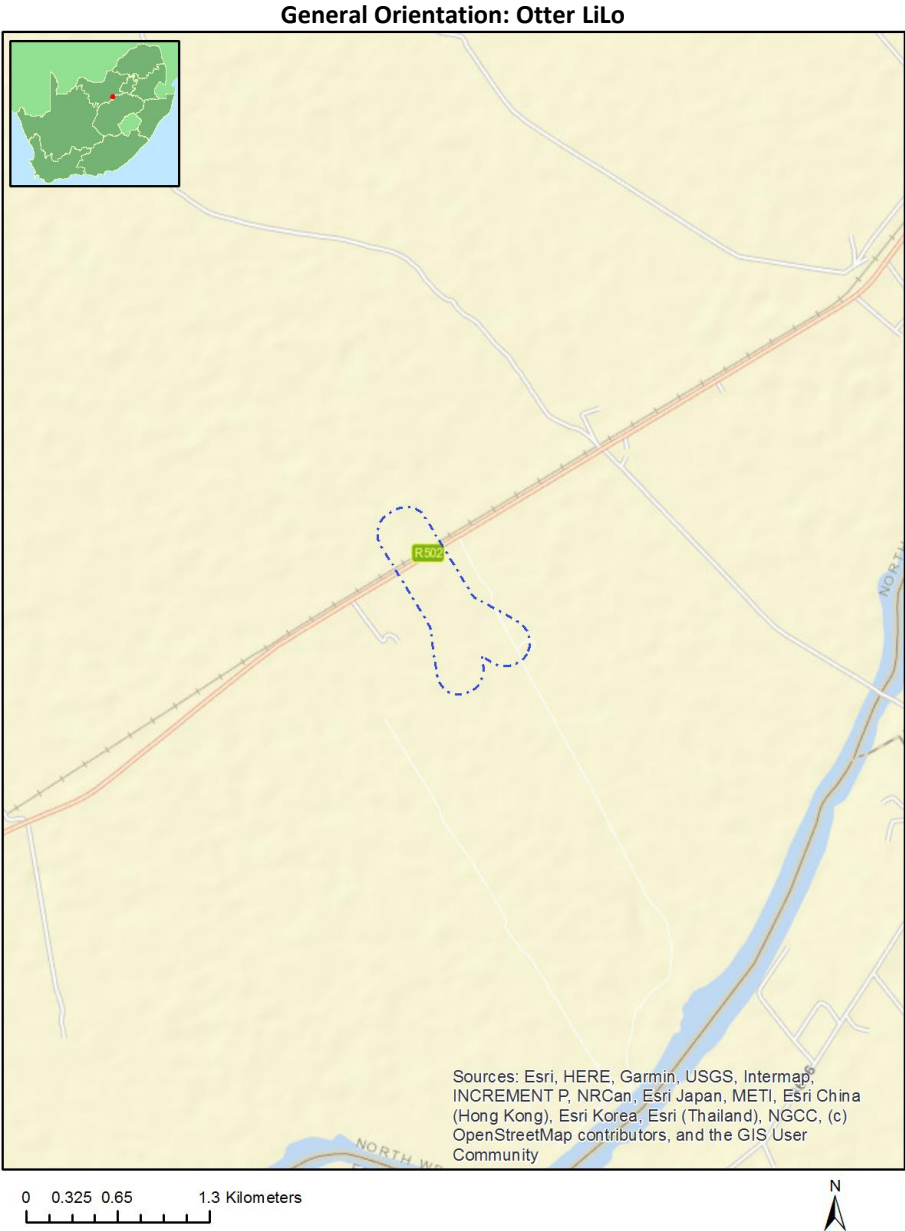
Application Category: Utilities Infrastructure | Electricity | Distribution and Transmission | Powerline

Table of Contents

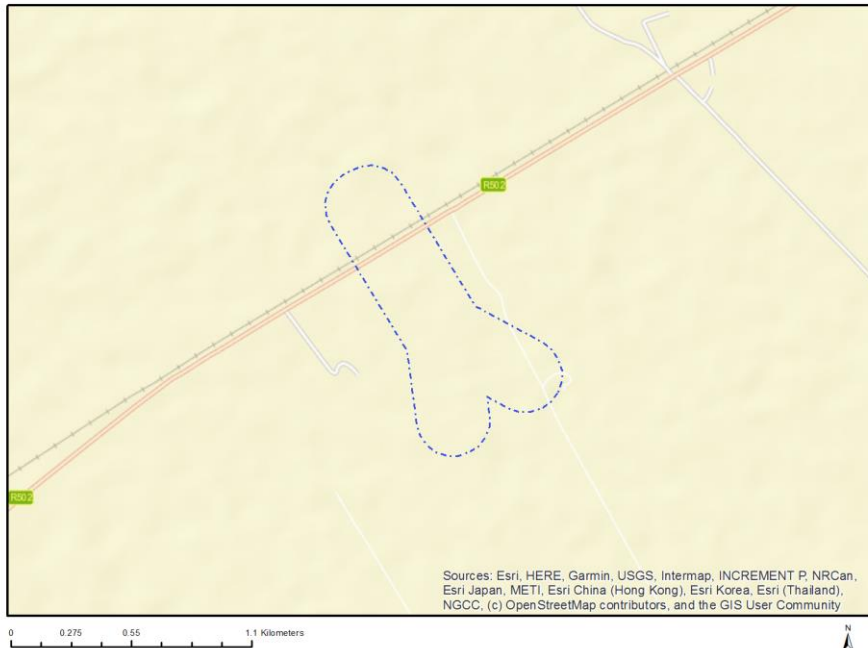
- Proposed Project Location 3
 - Orientation map 1: General location 3
- Map of proposed site and relevant area(s) 4
 - Cadastral details of the proposed site 4
 - Wind and Solar developments with an approved Environmental Authorisation or applications under consideration within 30 km of the proposed area 4
 - Environmental Management Frameworks relevant to the application 5
- Environmental screening results and assessment outcomes 5
 - Relevant development incentives, restrictions, exclusions or prohibitions 5
 - Proposed Development Area Environmental Sensitivity 6
 - Specialist assessments identified 6
- Results of the environmental sensitivity of the proposed area 8
 - MAP OF RELATIVE AGRICULTURE THEME SENSITIVITY 8
 - MAP OF RELATIVE ANIMAL SPECIES THEME SENSITIVITY 9
 - MAP OF RELATIVE AQUATIC BIODIVERSITY THEME SENSITIVITY 10
 - MAP OF RELATIVE ARCHAEOLOGICAL AND CULTURAL HERITAGE THEME SENSITIVITY 11
 - MAP OF RELATIVE CIVIL AVIATION THEME SENSITIVITY 12
 - MAP OF RELATIVE DEFENCE THEME SENSITIVITY 13
 - MAP OF RELATIVE PALEONTOLOGY THEME SENSITIVITY 14
 - MAP OF RELATIVE PLANT SPECIES THEME SENSITIVITY 15
 - MAP OF RELATIVE TERRESTRIAL BIODIVERSITY THEME SENSITIVITY 16

Proposed Project Location

Orientation map 1: General location



Map of proposed site and relevant area(s)



Cadastral details of the proposed site

Property details:

No	Farm Name	Farm/ Erf No	Portion	Latitude	Longitude	Property Type
1	KLERKSDRIFT	16	0	27°7'3.6S	26°28'52.23E	Farm
2	KLERKSDRIF	31	0	27°4'59.84S	26°29'9.61E	Farm
3	KLERKSDRIF	31	1	27°5'41.02S	26°29'40.62E	Farm Portion
4	KLERKSDRIFT	16	5	27°6'21.33S	26°30'9.64E	Farm Portion
5	KLERKSDRIF	31	0	27°4'59.84S	26°29'9.61E	Farm Portion

Development footprint¹ vertices:

No development footprint(s) specified.

Wind and Solar developments with an approved Environmental Authorisation or applications under consideration within 30 km of the proposed area

No	EIA Reference No	Classification	Status of application	Distance from proposed area (km)
1	12/12/20/2513/2/AM1	Solar PV	Approved	25.3
2	14/12/16/3/3/1/2668	Solar PV	Approved	22.2
3	14/12/16/3/3/2/559/AM3	Solar PV	Approved	12.2

¹ "development footprint", means the area within the site on which the development will take place and includes all ancillary developments for example roads, power lines, boundary walls, paving etc. which require vegetation clearance or which will be disturbed and for which the application has been submitted.

4	14/12/16/3/3/1/1519	Solar PV	Approved	12.2
5	14/12/16/3/3/1/2475	Solar PV	Approved	25.2
6	14/12/16/3/3/1/2691	Solar PV	Approved	16.3
7	12/12/20/2513/4	Solar PV	Approved	25.3
8	14/12/16/3/3/1/2365	Solar PV	Approved	25.7
9	14/12/16/3/3/1/2667	Solar PV	Approved	22.1
10	14/12/16/3/3/1/2669	Solar PV	Approved	25.1
11	14/12/16/3/3/2/954	Solar PV	Approved	9.7
12	14/12/16/3/3/2/1/2369	Solar PV	Approved	27.6
13	14/12/16/3/3/1/2546	Solar PV	Approved	11
14	12/12/20/2513/3/AM6	Solar PV	Approved	25.3
15	14/12/16/3/3/2/559/AM2	Solar PV	Approved	12.2
16	12/12/20/2513/3/AM2	Solar PV	Approved	25.3
17	14/12/16/3/3/1/2369	Wind	Approved	27.6
18	12/12/20/2513/1/AM2	Solar PV	Approved	25.3
19	12/12/20/2513/3	Solar PV	Approved	25.3
20	14/12/16/3/3/2/954/AM1	Solar PV	Approved	9.7
21	14/12/16/3/3/1/2535	Solar PV	Approved	28.6
22	12/12/20/2513/1/AM1	Solar PV	Approved	25.3
23	12/12/20/2513/3/AM3	Solar PV	Approved	25.3
24	14/12/16/3/3/2/559/AM1	Solar PV	Approved	12.2
25	12/12/20/2513/1	Solar PV	Approved	25.3
26	14/12/16/3/3/1/2474	Solar PV	Approved	16.3
27	12/12/20/2513/2/AM5	Solar PV	Approved	25.3
28	14/12/16/3/3/1/2655	Solar PV	Approved	25.7
29	14/12/16/3/3/2/559/AM4	Solar PV	Approved	12.2
30	12/12/20/2513/3/AM1	Solar PV	Approved	25.3
31	14/12/16/3/3/1/1519/AM1	Solar PV	Approved	12.2
32	14/12/16/3/3/1/2591	Solar PV	Approved	26.1
33	12/12/20/2513/4/AM1	Solar PV	Approved	25.3
34	12/12/20/2513/1/AM3	Solar PV	Approved	25.3

Environmental Management Frameworks relevant to the application

No intersections with EMF areas found.

Environmental screening results and assessment outcomes

The following sections contain a summary of any development incentives, restrictions, exclusions or prohibitions that apply to the proposed development site as well as the most environmental sensitive features on the site based on the site sensitivity screening results for the application classification that was selected. The application classification selected for this report is:

Utilities Infrastructure | Electricity | Distribution and Transmission | Powerline.

Relevant development incentives, restrictions, exclusions or prohibitions

The following development incentives, restrictions, exclusions or prohibitions and their implications that apply to this site are indicated below.

Incentive, restriction or prohibition	Implication
Strategic Transmission Corridor-Central corridor	https://screening.environment.gov.za/ScreeningDownloads/Developmen

	tZones/Combined_EGI.pdf
Renewable energy development zones 10-Klerksdorp	https://screening.environment.gov.za/ScreeningDownloads/DevelopmentZones/Combined_REDZ.pdf
Main Electricity Distribution Substation	https://screening.environment.gov.za/ScreeningDownloads/DevelopmentZones/Distribution_Transmission.pdf

Proposed Development Area Environmental Sensitivity

The following summary of the development site environmental sensitivities is identified. Only the highest environmental sensitivity is indicated. The footprint environmental sensitivities for the proposed development footprint as identified, are indicative only and must be verified on site by a suitably qualified person before the specialist assessments identified below can be confirmed.

Theme	Very High sensitivity	High sensitivity	Medium sensitivity	Low sensitivity
Agriculture Theme			X	
Animal Species Theme				X
Aquatic Biodiversity Theme				X
Archaeological and Cultural Heritage Theme				X
Civil Aviation Theme				X
Defence Theme				X
Paleontology Theme			X	
Plant Species Theme			X	
Terrestrial Biodiversity Theme	X			

Specialist assessments identified

Based on the selected classification, and the known impacts associated with the proposed development, the following list of specialist assessments have been identified for inclusion in the assessment report. It is the responsibility of the EAP to confirm this list and to motivate in the assessment report, the reason for not including any of the identified specialist study including the provision of photographic evidence of the site situation.

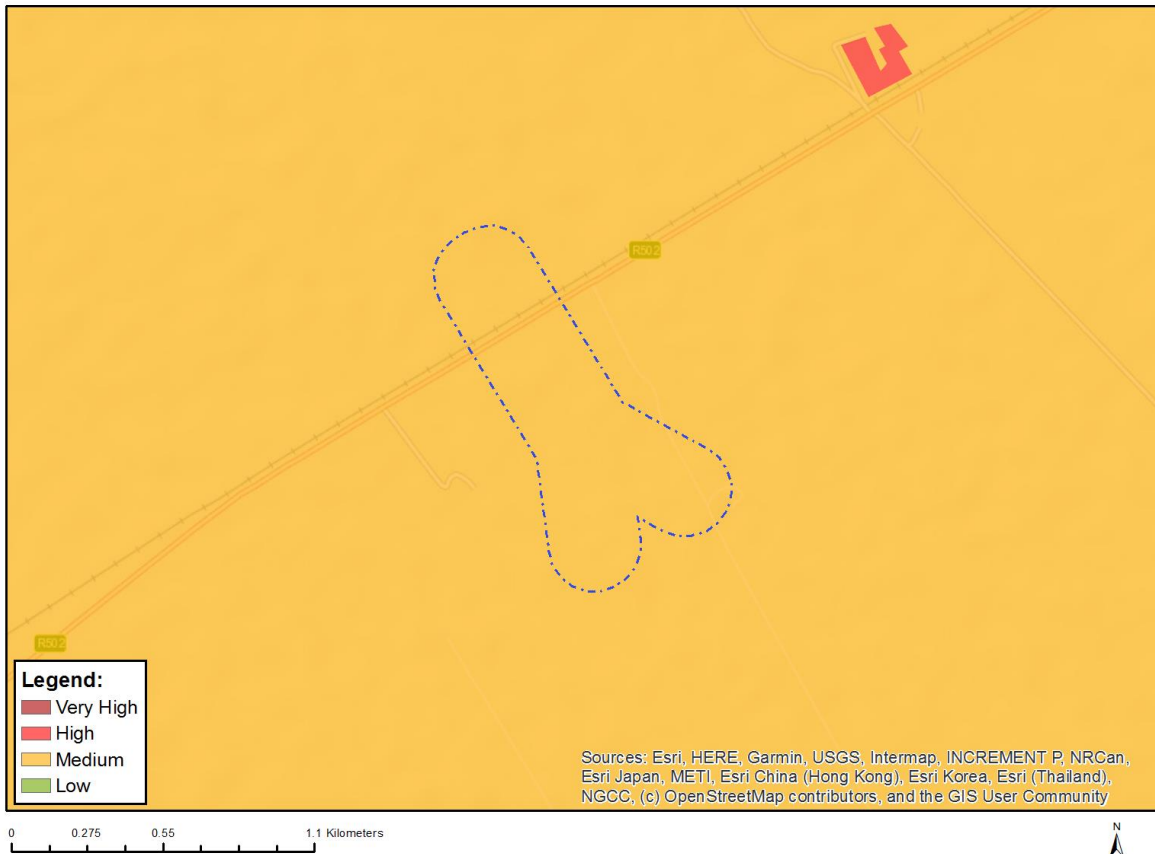
No	Specialist assessment	Assessment Protocol
1	Agricultural Impact Assessment	https://screening.environment.gov.za/ScreeningDownloads/AssessmentProtocols/Gazetted_General_Agriculture_Assessment_Protocols.pdf
2	Landscape/Visual Impact Assessment	https://screening.environment.gov.za/ScreeningDownloads/AssessmentProtocols/Gazetted_General_Requirement_Assessment_Protocols.pdf
3	Archaeological and Cultural Heritage Impact Assessment	https://screening.environment.gov.za/ScreeningDownloads/AssessmentProtocols/Gazetted_General_Requirement_Assessment_Protocols.pdf
4	Palaeontology Impact Assessment	https://screening.environment.gov.za/ScreeningDownloads/AssessmentProtocols/Gazetted_General_Requirement_Assessment_Protocols.pdf
5	Terrestrial Biodiversity Impact Assessment	https://screening.environment.gov.za/ScreeningDownloads/AssessmentProtocols/Gazetted_Terrestrial_Biodiversity_Assessment_Protocols.pdf

		Protocols.pdf
6	Aquatic Biodiversity Impact Assessment	https://screening.environment.gov.za/ScreeningDownloads/AssessmentProtocols/Gazetted Aquatic Biodiversity Assessment Protocols.pdf
7	Avian Impact Assessment	https://screening.environment.gov.za/ScreeningDownloads/AssessmentProtocols/Gazetted Avifauna Assessment Protocols.pdf
8	Civil Aviation Assessment	https://screening.environment.gov.za/ScreeningDownloads/AssessmentProtocols/Gazetted Civil Aviation Installations Assessment Protocols.pdf
9	RFI Assessment	https://screening.environment.gov.za/ScreeningDownloads/AssessmentProtocols/Gazetted General Requirement Assessment Protocols.pdf
10	Geotechnical Assessment	https://screening.environment.gov.za/ScreeningDownloads/AssessmentProtocols/Gazetted General Requirement Assessment Protocols.pdf
11	Plant Species Assessment	https://screening.environment.gov.za/ScreeningDownloads/AssessmentProtocols/Gazetted Plant Species Assessment Protocols.pdf
12	Animal Species Assessment	https://screening.environment.gov.za/ScreeningDownloads/AssessmentProtocols/Gazetted Animal Species Assessment Protocols.pdf

Results of the environmental sensitivity of the proposed area.

The following section represents the results of the screening for environmental sensitivity of the proposed site for relevant environmental themes associated with the project classification. It is the duty of the EAP to ensure that the environmental themes provided by the screening tool are comprehensive and complete for the project. Refer to the disclaimer.

MAP OF RELATIVE AGRICULTURE THEME SENSITIVITY

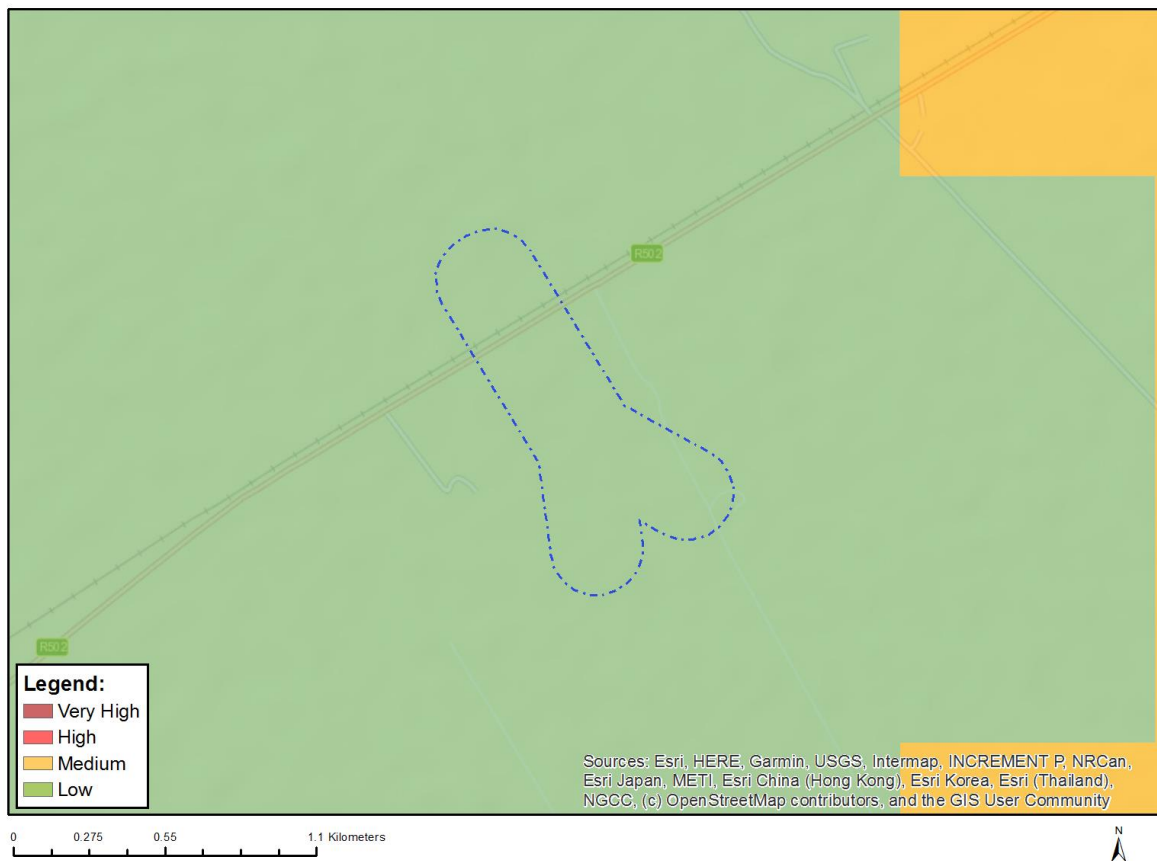


Very High sensitivity	High sensitivity	Medium sensitivity	Low sensitivity
		X	

Sensitivity Features:

Sensitivity	Feature(s)
Medium	Land capability;06. Low-Moderate/07. Low-Moderate/08. Moderate

MAP OF RELATIVE ANIMAL SPECIES THEME SENSITIVITY



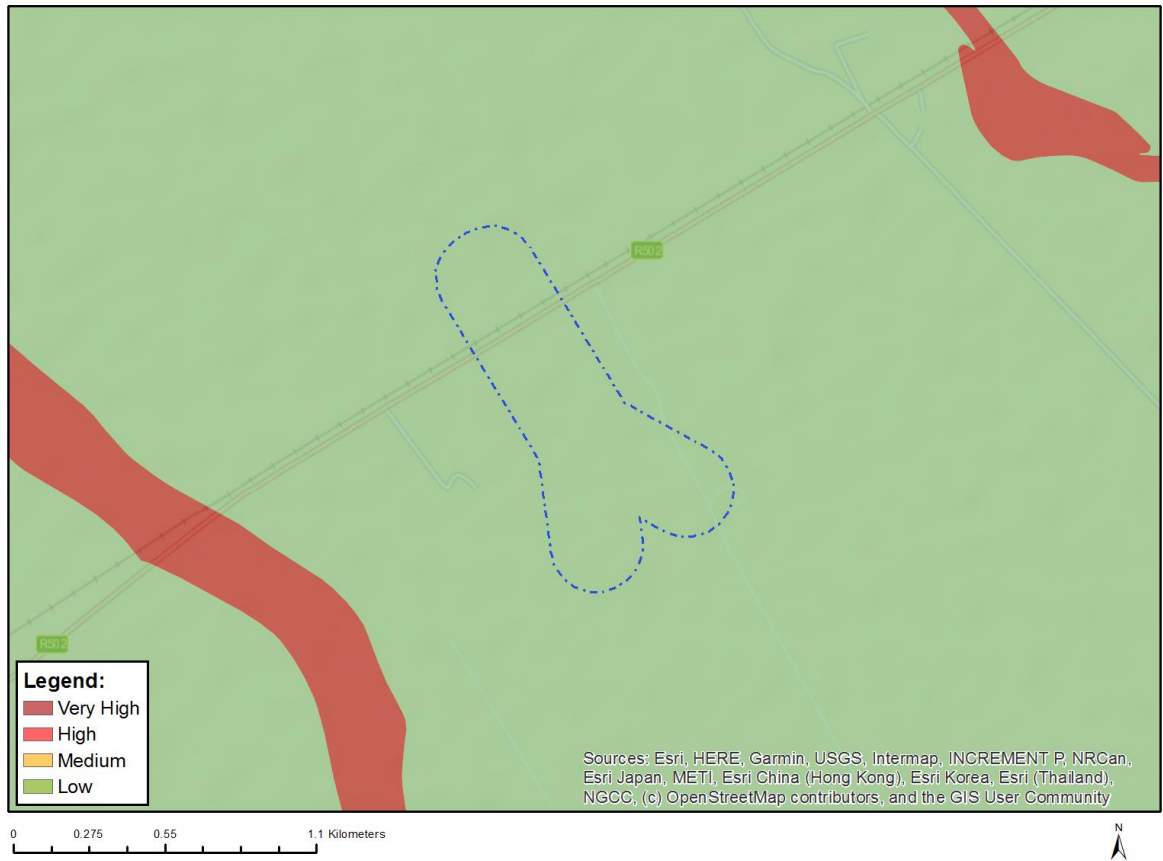
Where only a sensitive plant unique number or sensitive animal unique number is provided in the screening report and an assessment is required, the environmental assessment practitioner (EAP) or specialist is required to email SANBI at eiadatarequests@sanbi.org.za listing all sensitive species with their unique identifiers for which information is required. The name has been withheld as the species may be prone to illegal harvesting and must be protected. SANBI will release the actual species name after the details of the EAP or specialist have been documented.

Very High sensitivity	High sensitivity	Medium sensitivity	Low sensitivity
			X

Sensitivity Features:

Sensitivity	Feature(s)
Low	Subject to confirmation

MAP OF RELATIVE AQUATIC BIODIVERSITY THEME SENSITIVITY

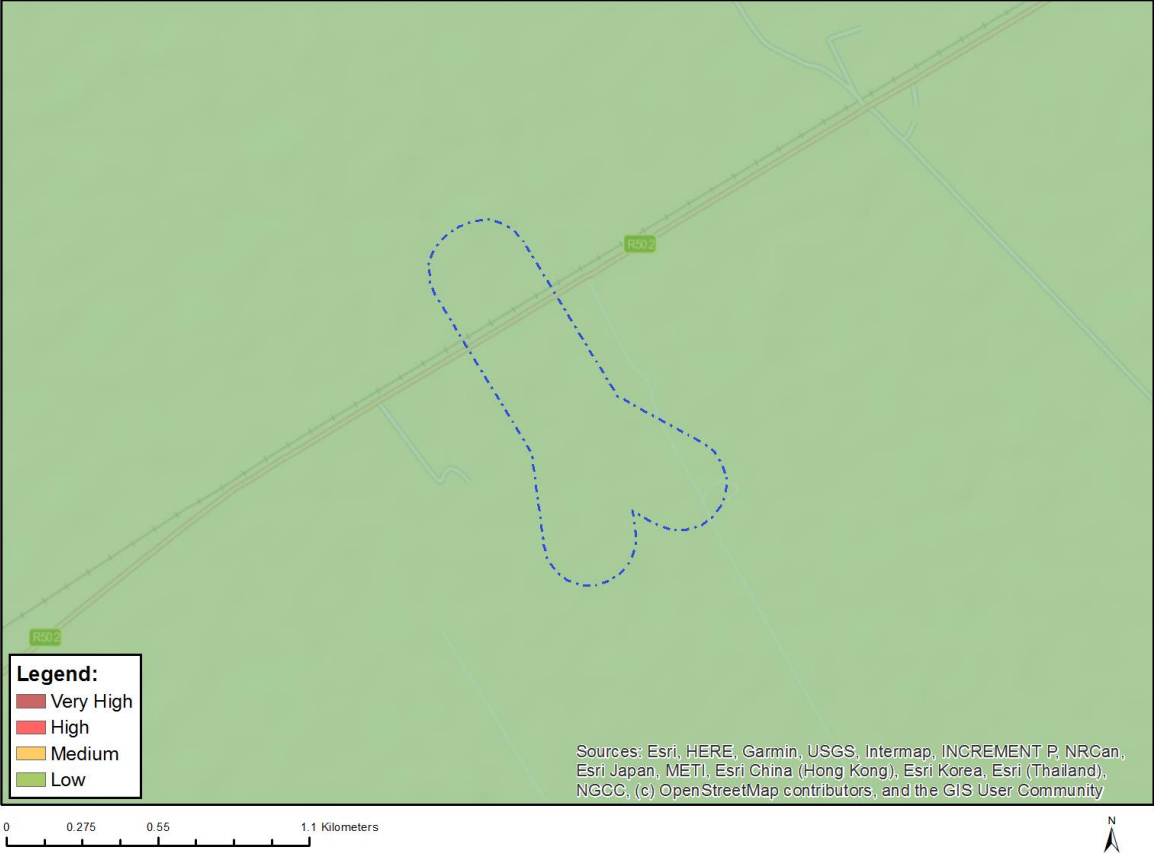


Very High sensitivity	High sensitivity	Medium sensitivity	Low sensitivity
			X

Sensitivity Features:

Sensitivity	Feature(s)
Low	Low sensitivity

MAP OF RELATIVE ARCHAEOLOGICAL AND CULTURAL HERITAGE THEME SENSITIVITY

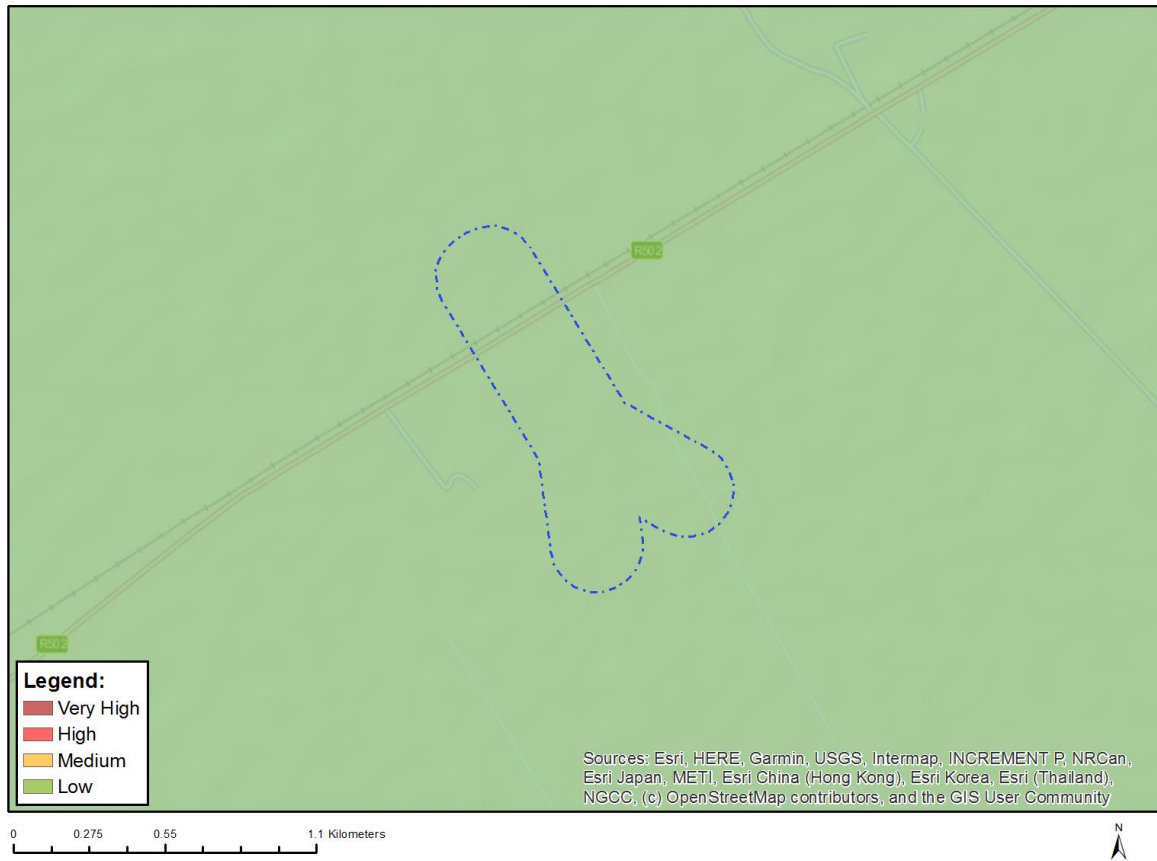


Very High sensitivity	High sensitivity	Medium sensitivity	Low sensitivity
			X

Sensitivity Features:

Sensitivity	Feature(s)
Low	Low sensitivity

MAP OF RELATIVE CIVIL AVIATION THEME SENSITIVITY



Very High sensitivity	High sensitivity	Medium sensitivity	Low sensitivity
			X

Sensitivity Features:

Sensitivity	Feature(s)
Low	Low sensitivity

MAP OF RELATIVE DEFENCE THEME SENSITIVITY

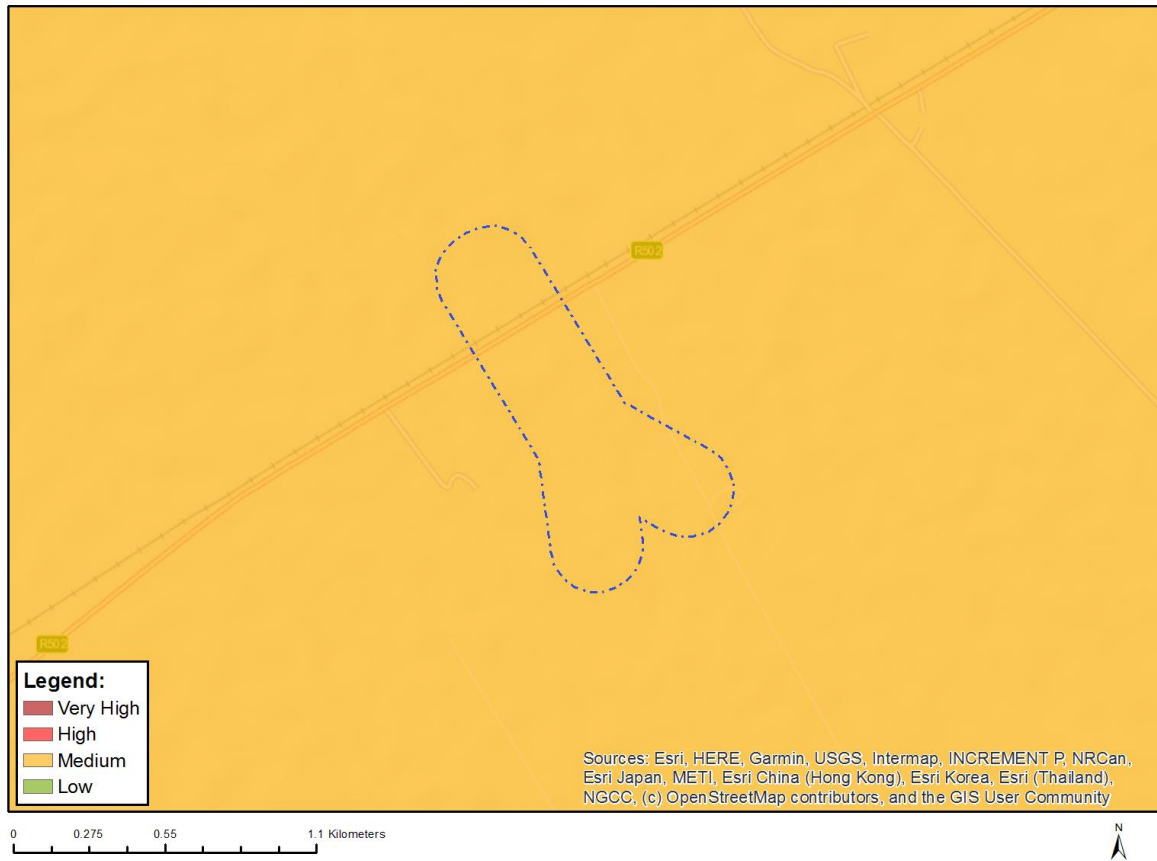


Very High sensitivity	High sensitivity	Medium sensitivity	Low sensitivity
			X

Sensitivity Features:

Sensitivity	Feature(s)
Low	Low Sensitivity

MAP OF RELATIVE PALEONTOLOGY THEME SENSITIVITY

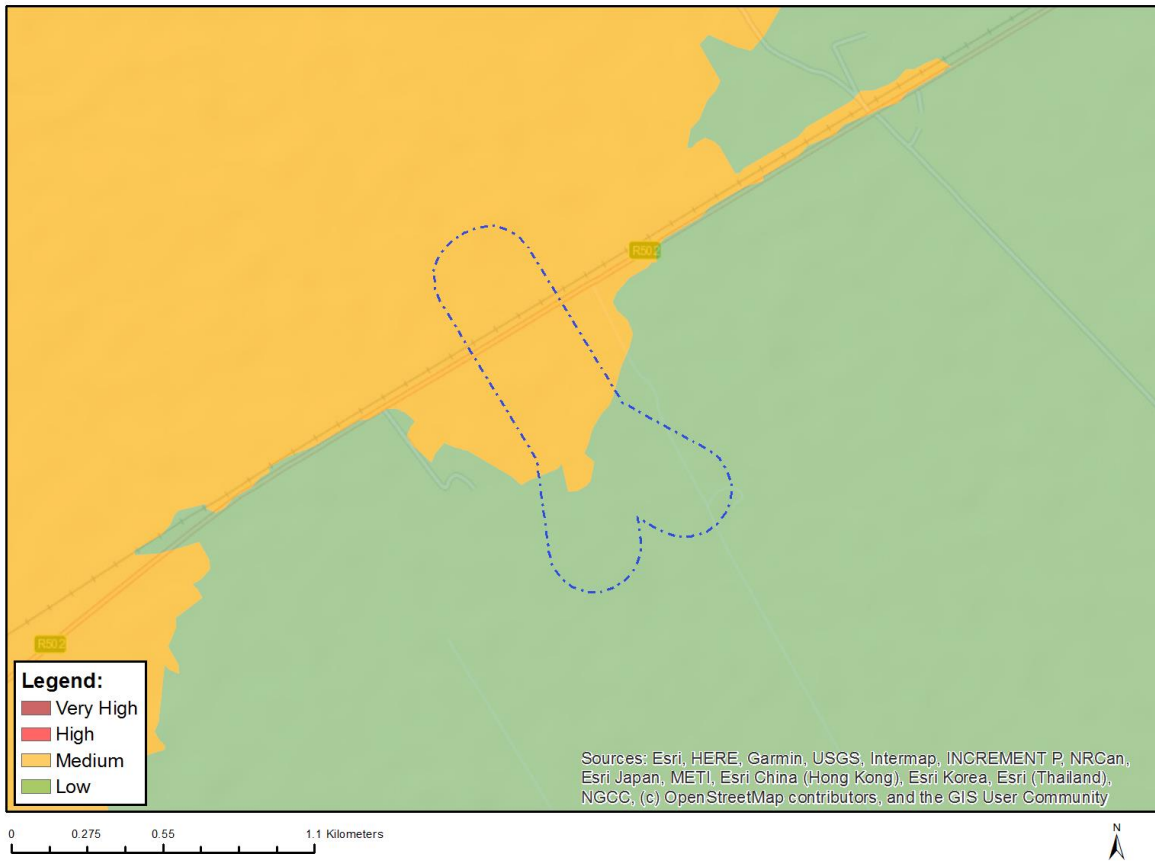


Very High sensitivity	High sensitivity	Medium sensitivity	Low sensitivity
		X	

Sensitivity Features:

Sensitivity	Feature(s)
Low	Features with a Low paleontological sensitivity
Medium	Features with a Medium paleontological sensitivity

MAP OF RELATIVE PLANT SPECIES THEME SENSITIVITY



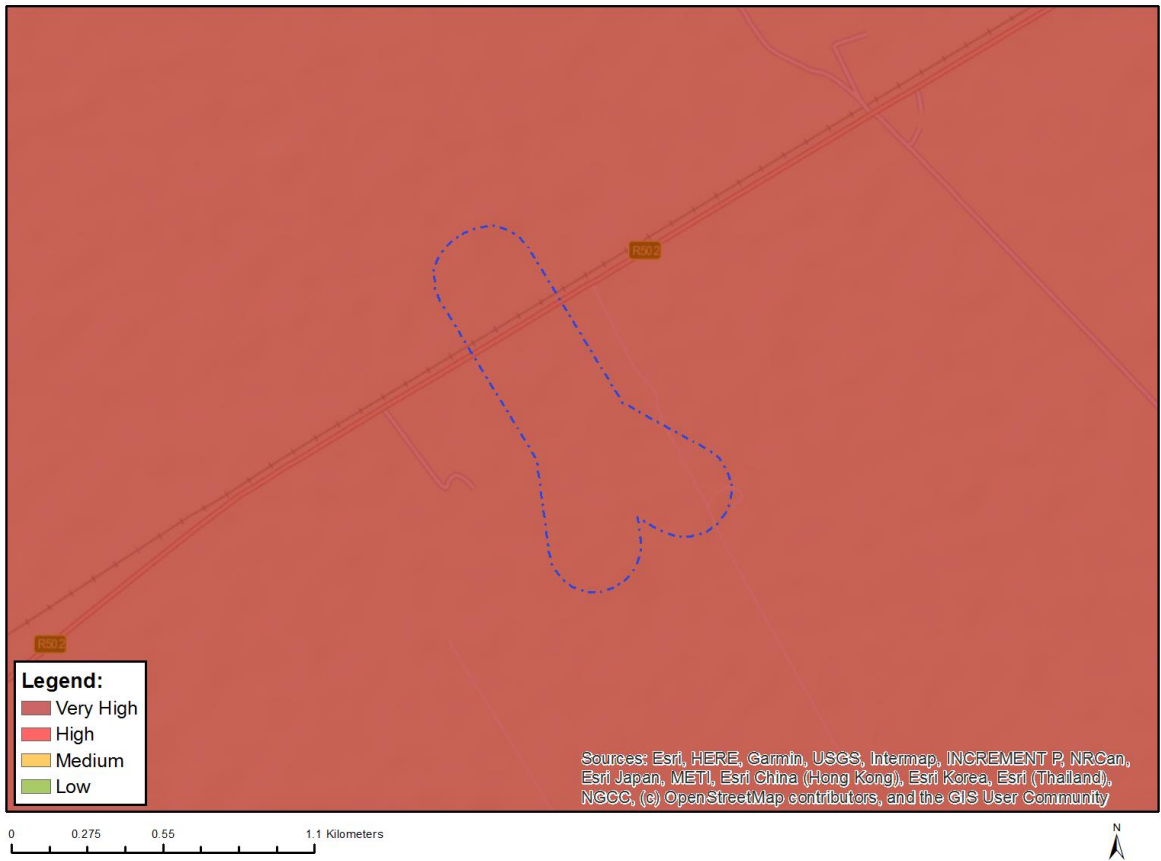
Where only a sensitive plant unique number or sensitive animal unique number is provided in the screening report and an assessment is required, the environmental assessment practitioner (EAP) or specialist is required to email SANBI at eiadatarequests@sanbi.org.za listing all sensitive species with their unique identifiers for which information is required. The name has been withheld as the species may be prone to illegal harvesting and must be protected. SANBI will release the actual species name after the details of the EAP or specialist have been documented.

Very High sensitivity	High sensitivity	Medium sensitivity	Low sensitivity
		X	

Sensitivity Features:

Sensitivity	Feature(s)
Low	Low Sensitivity
Medium	Sensitive species 1261

MAP OF RELATIVE TERRESTRIAL BIODIVERSITY THEME SENSITIVITY



Very High sensitivity	High sensitivity	Medium sensitivity	Low sensitivity
X			

Sensitivity Features:

Sensitivity	Feature(s)
Very High	ESA 1
Very High	EN_Vaal-Vet Sandy Grassland

Appendix C. I&AP Registration Form



INTERESTED AND AFFECTED PARTY REGISTRATION FORM

Name	
Organisation	
Telephone Number	
Physical Address	
Postal Address	
Fax No.	
Email address	

Please state your interest (i.e. direct business, financial, personal or other interest) with respect to the approval or refusal of the registration of the proposed application.

Please state any concerns, suggestions and/or potential impacts that should be considered during the application process.

I&AP registrations and comments to be submitted to GIBB Environmental using the details below:

Attention: Mr Donovan Henning

Email: donavanh@nema.co.za

cc: nbrink@gibbenvironmental.co.za



The Office of GIBB Environmental is open during office hours Monday to Friday, excluding Public holidays.