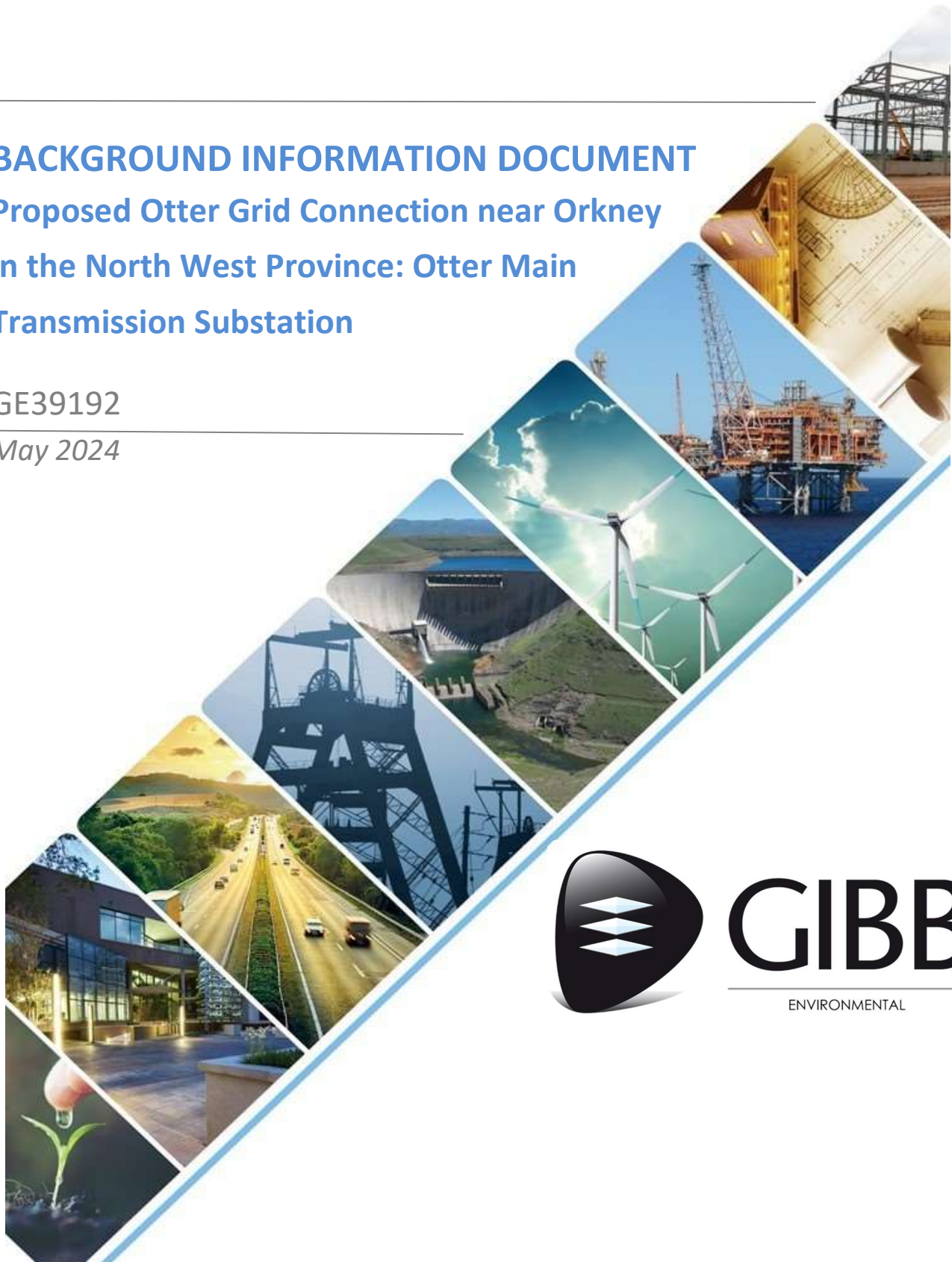

BACKGROUND INFORMATION DOCUMENT
Proposed Otter Grid Connection near Orkney
in the North West Province: Otter Main
Transmission Substation

GE39192
May 2024



GIBB
ENVIRONMENTAL

Abbreviations / Acronyms / Definitions

List of Abbreviations and Acronyms	
BID	Background Information Document
DFFE	Department of Forestry, Fisheries and the Environment
EAP	Environmental Assessment Practitioner
EMPr	Environmental Management Programme
EGI	Electricity Grid Infrastructure
GA	General Authorisation
GN	Government Notice
I&APs	Interested and Affected Parties
kV	Kilovolt
MTS	Main Transmission Substation
NEMA	National Environmental Management Act, 1998 (Act No. 107 of 1998)
OHL	Overhead Line
REDZ	Renewable Energy Development Zone

1 Introduction

ABO Energy South Africa (Pty) Ltd, the proponent, intends to register the proposed Grid Connection Corridor and associated Electricity Grid Infrastructure (EGI) therein to connect the ABO Otter 1 and ABO Otter 2 Solar Energy Facilities to the national electricity grid. The facilities are located south-west of Orkney in the North West Province. It is proposed that a connection be established between the solar energy facilities and an existing Eskom 400 kV line (Mercury/Mookodi 1), located to the south of the facilities. The Corridor is wholly located within the Klerksdorp Renewable Energy Development Zone (REDZ) as well as within the Central Strategic Transmission Corridor. Therefore, the registration process for the Corridor is being undertaken in terms of the National Environmental Management Act, 1998 (Act No. 107 of 1998) and the *Standard for the Development and Expansion of Power Lines and Substation within Identified Geographical Areas Revision 2 ('the Standard')*.

The following EGI components will form part of the proposed Grid Connection Corridor:

1. A Main Transmission Substation (MTS) (i.e., a collector / switching / transformation substation) and associated auxiliary buildings (i.e. for control / storage / electrical infrastructure / components) with a total development footprint of up to 15 ha, including but not limited to the construction of a new platform with an earth mat and civil works, as well as new infrastructure such as feeder bay/s, line bay/s, busbar/s, circuit breaker/s, bussection/s, and/or transformer/s, with various protection equipment. There would be a radio mast on top of the structure that would be up to 50 m in height.
2. Up to 2 (two) overhead lines (OHL) connecting the Otter Solar Energy Facilities to the MTS via single / double-circuit of up to 132 kV capacity, mono pole lines, complete with structures, foundations, conductor, fibre layout, insulation, and assemblies.

-
3. One Loop-in-Loop-out (LiLo) connection into an existing Eskom 400 kV line, via a single / double-circuit power line of up to 400 kV between the Otter MTS / collector / switching / transformation substation and an Eskom 400 kV line (Mercury/Mookodi 1) complete with structures, foundations, conductor, fibre layout, insulation, and assemblies.

The proposed Otter Grid Connection including an MTS / collector / switching / transformation substation and associated auxiliary buildings, a 400 kV LiLo connection and up to two OHLs, will be assessed within a corridor approximately 300 m in width. A 250 m wide corridor would be registered.

Each of the above-mentioned components is subject to a separate registration process (except for the LiLo which will follow a Basic Assessment process to obtain an Environmental Authorisation). This Background Information Document (BID) covers the **MTS and its associated infrastructure**.

GIBB Environmental (Pty) Ltd (GIBB) has been appointed as the independent Environmental Assessment Practitioner (EAP) by the proponent (ABO Energy South Africa (Pty) Ltd) to undertake the required registration of the proposed Otter Main Transmission Substation (MTS) /collector /switching /transformation substation, near Orkney, North-West Province. The registration process for the Otter MTS is being undertaken in terms of the National Environmental Management Act, 1998 (Act No. 107 of 1998) the *Standard for the Development and Expansion of Power Lines and Substation within Identified Geographical Areas Revision 2 ('the Standard')*.

1.1 Purpose of this Background Information Document

This BID will be distributed electronically to all stakeholders identified as potential Interested and Affected Parties (I&AP) and made available on the GIBB Environmental website. The availability of the BID will be announced through an advert in two local newspapers. The BID will be used to announce the project and provide a high-level overview of the project to stakeholders. The BID is intended to provide stakeholders with sufficient project information for them to decide if they consider themselves to be an I&AP for the project. I&APs are required to register with the EAP (GIBB Environmental) at which point they will be added to the I&AP register (refer to **Section 2.3** for details of how to register).

1.2 Legal Context

The Otter MTS and associated infrastructure will be located in the Central Strategic Transmission Corridor as identified in Government Notice (GN) No. 113 in Government Gazette No. 41445. The Strategic Transmission Corridors have already been subject to a Strategic Environmental Assessment which identified areas suitable for the development of grid connection infrastructure.

Due to its location within a Strategic Transmission Corridor an application for environmental authorisation is not required for the proposed Otter MTS. The Proponent is however required

to register the MTS with the Department of Forestry, Fisheries and the Environment (DFFE) in-line with the requirements of the *Standard for the Development and Expansion of Power Lines and Substation within Identified Geographical Areas Revision 2 ('the Standard')* promulgated under GN No. 2313 of 27 July 2022.

Relevance of the Standards

Prior to the gazetting of the Standard the development of the Otter MTS would have triggered the need to undertake an application for environmental authorisation in the format of a Basic Assessment process. With the publishing of the Standard in July 2022, an application for environmental authorisation is no longer required. The project details of the Otter MTS were reviewed (see Table 1) to ensure that it is eligible for a registration process in terms of the Standard.

Table 1: Criteria for a registration process

No.	Requirement	Comment
1.	The site must be located in areas identified by the national web based environmental screening tool as being of medium or low environmental sensitivity and confirmed to be such for identified environmental themes.	All of the environmental sensitivity themes are rated as low to medium sensitivity by the environmental screening tool with the exception of aquatic biodiversity (very high) and terrestrial biodiversity (very high). Specialist site sensitivity verifications have been undertaken for all identified environmental themes and all themes were confirmed to be of low or medium sensitivity where infrastructure is proposed. Details will be provided in the Environmental Sensitivity Report.
2	The site must be located within a strategic transmission corridor, for the development or expansion of electricity transmission and distribution power line infrastructure and substations	The Otter MTS is located in the Central Strategic Transmission Corridor.
3	The development triggers Listing Notice 1 activity 11, activity 47 or Listing Notice 2, activity 9.	The Otter MTS will trigger Activity 11(i) in Listing Notice 1. More information will be provided in the Environmental Sensitivity Report.

1.3 Process and Timeline

The process of registering the Otter MTS will follow 15 steps, detailed in Table 2 below.

Table 2: Registration process steps

No.	Requirement	Comment
1	Proponent to identify a preliminary corridor and substation sites using the national web based environmental screening tool (screening tool) and additional relevant spatial datasets, where available.	The Proponent has identified a route and location for the Otter MTS and its associated infrastructure. Refer to Appendix A .
2	An independent environmental assessment practitioner (EAP) must be appointed to assist to identify a preliminary corridor, a proposed route, and substation sites.	The Proponent (ABO Energy South Africa (Pty) Ltd) has appointed GIBB Environmental as the EAP.
3	The EAP, as a minimum, must follow the public participation process required in Chapter 6 of the	The following public participation process will be undertaken:

No.	Requirement	Comment
	EIA Regulations, excluding the requirements not relevant to the standard (as described in Chapter 2 of the standard)	<ul style="list-style-type: none"> • Notification of stakeholders/ potential I&APs of the project by: <ul style="list-style-type: none"> ○ Circulating a BID via e-mail to stakeholders and I&APs identified on the database. ○ Placing a newspaper advert in one local newspaper. ○ Placement of notice boards along the powerline corridor/route at locations accessible to the public. • Placement of the BID and I&AP registration forms on a publicly accessible website. • Maintaining a register of registered I&APs. • Availing the draft Environmental Sensitivity Report (ESR) to stakeholders for a 30 day comment period. The report will be made available electronically on GIBB Environmental's website and as a hard copy at a Public Place. • Notifying registered I&APs of the availability of the final Environmental Sensitivity Report. • Collating and responding to comments received on the Environmental Sensitivity Report. • Informing I&APs within 14 days of a registration number being received and informing them of the opportunity to appeal the decision.
4	The EAP must appoint a specialist team to undertake a site verification and a walkthrough of specific areas; and prepare a preliminary database of possible stakeholders and interested and affected parties (I&APs) along the proposed route and near the substation sites	<p>A specialist team has been appointed and site investigations are complete. All the appointed specialists undertook site investigations except for the palaeontologist. The palaeontologist confirmed that no fieldwork was needed as the site was of 'low sensitivity' according to the SAHRIS Palaeo-sensitivity map.</p> <p>A database of possible stakeholders and I&APs has been compiled.</p>
5	The EAP must announce the proposed development or expansion by making available a background information document (BID) on a publicly accessible website and distributing it to identified stakeholders and I&APs identified on the database	This document is the BID for the Otter MTS. The BID will be made available on GIBB Environmental's website. The BID will be distributed to the preliminary I&AP database.
6	The EAP and specialists must identify a proposed route within the preliminary corridor. The initial servitude negotiations must be undertaken in conjunction to ensure that the route is not fatally flawed in terms of servitude access.	The location of the Otter MTS and route for the access road has been identified and assessed by the specialist team. The location has been approved by the affected landowners. Proof of servitude negotiations will be included in the Environmental Sensitivity Report.
7	The EAP must compile an environmental sensitivity report, with specialist input, to document the process to identify the proposed route and the outcome of the initial servitude negotiations	The compilation of the Environmental Sensitivity Report is underway with input from the specialist team.
8	Release the environmental sensitivity report to stakeholders for a 30-day comment period	Pending. The Environmental Sensitivity Report will be made available on GIBB Environmental's website.
9	The proposed route must be finalised based on comments received during the public participation process and refining the route, where relevant. The	Pending. The Environmental Sensitivity Report will be updated based on comments received during the public participation process.

No.	Requirement	Comment
	proposed route is then referred to as the final pre-negotiated route.	
10	A final environmental sensitivity report must be prepared, which maps the final pre-negotiated route including any mitigation devices, a record of comments and responses, Part C of the Generic EMPr (where applicable), and final confirming statements from the specialists	Pending. The Final Environmental Sensitivity report, part C of the generic EMP and confirming statements from specialists will be prepared. These documents will be made available on GIBB Environmental's website and IA&Ps notified of the availability thereof.
11	Notify registered I&APs of the availability of the final environmental sensitivity report for information	Pending. Registered I&APs will be notified of the availability of the Final Environmental Sensitivity report.
12	The proponent must submit the relevant registration form contained in the standard. It must include relevant supporting documents as specified in Chapter 2 of the standard.	Pending. The registration form will be submitted to DFFE with the relevant supporting documentation.
13	The competent authority must, within 30 days of receipt of the information submitted, issue a registration number or, indicate to the proponent that the submission is incomplete and identify the outstanding information	Pending.
14	Within 14 days of receipt of a registration number, all registered I&APs must be informed of the registration and the opportunity to appeal	Pending. GIBB Environmental will notify I&APs of the registration number and opportunity to appeal within 14 days of the number being received.
15	Proof of registration must be lodged with the relevant Local Municipality and Provincial Environmental Department; made available on request by any stakeholder or Authority; and made available, where the proponent or owner has a website, on such publicly accessible website.	Pending. To be undertaken upon receipt of the registration number.

2 Background and Project Description

ABO Energy South Africa (Pty) Ltd propose to register a new MTS (Otter MTS) and associated infrastructure as part of the Otter Grid Connection. Otter MTS will be a collector / switching / transformation substation with a capacity of up to 400 kV. Otter MTS will be located at the southern boundary of the Remaining Extent of the Farm Klerksdrif No. 31, with a footprint of approximately 15 ha including auxiliary buildings. Further details of the Otter MTS are provided in the table below.

Table 3: Details of Otter MTS

Name	Proposed Otter Main Transmission Substation (MTS) and auxiliary buildings
Location/ affected properties	Farm Klerksdrif No. 23 Remaining Extent of the Farm Klerksdrif No. 31 Farm Klerksdrif No. 23 (access road only) Portion 1 of the Farm Klerksdrif No. 23 (access road only)
Connection	The Otter MTS will collect multiple 132kV overhead lines (located within the grid corridor) and step-up to 400kV (if required). Consolidated overhead lines would leave the MTS for connection to the existing Eskom 400kV line
Capacity	Up to 400kV
Footprint	Up to approximately 15Ha. This includes auxiliary buildings
Height	Up to approximately 10m There would be a radio mast on top of the structure which would be up to 50m in height.
Access	An access road up to 6m wide would be required. The access road would follow existing farms roads as far as possible which may be upgraded. The access road would connect directly to the R502 at an existing access point. The access point would be shared with the Otter SEFs.

2.1 Project Location

Otter MTS would be located south-west of Orkney, North West, within the jurisdiction of the City of Matlosana Local Municipality, within the Dr Kenneth Kaunda District Municipality. The Otter MTS is wholly located in the Klerksdorp REDZ and the Central Strategic Transmission Corridor. Refer to **Appendix A** for a Locality Map.

Table 4: Otter MTS approximate GPS location

Corner and Centre Points	Latitude	Longitude
Corner 1	27° 5'35.07"S	26°29'13.50"E
Corner 2	27° 5'28.43"S	26°29'25.99"E
Corner 3	27° 5'39.61"S	26°29'33.40"E
Corner 4	27° 5'46.24"S	26°29'20.91"E
Centre	27° 5'37.07"S	26°29'23.42"E

2.2 Screening Tool Report

A screening tool report was drawn from the DFFE online screening tool on 24 January 2024. The screening tool report is available in **Appendix B**. The tool identified the following sensitivities where the Otter MTS and its associated infrastructure is proposed.

Table 5: Site environmental sensitivities as identified by the DFFE Screening Tool Report

Theme	Screening Tool Sensitivity Rating	Registration process approach
Agricultural	Medium	An agricultural specialist has completed the site sensitivity verification.
Animal species	Low	An ecologist has completed the site sensitivity verification.
Aquatic biodiversity	Very High	An aquatic ecologist has completed the site sensitivity verification and confirmed sensitivities to be of low and medium significance where aquatic resources could be affected by the type of infrastructure proposed.
Archaeological and cultural heritage theme	Low	An archaeologist has completed the site sensitivity verification.
Civil Aviation	Low	N/A, no specialist study necessary
Defence theme	Low	N/A, no specialist study necessary
Palaeontology	Medium	A specialist has completed the site sensitivity verification.
Plant species	Medium	An ecologist has completed the site sensitivity verification.
Terrestrial biodiversity	Very High	An ecologist has completed the site sensitivity verification and confirmed sensitivities to be of low and medium significance where terrestrial biodiversity could be affected by the type of infrastructure proposed.

The appointed team of specialists has completed the required site sensitivity verification assessments. The key findings of these assessment will be incorporated into the Environmental Sensitivity Report. The draft Environmental Sensitivity Report will be made available for registered I&APs to review and provide comment on for a period of 30 days.

2.3 EAP Contact Details

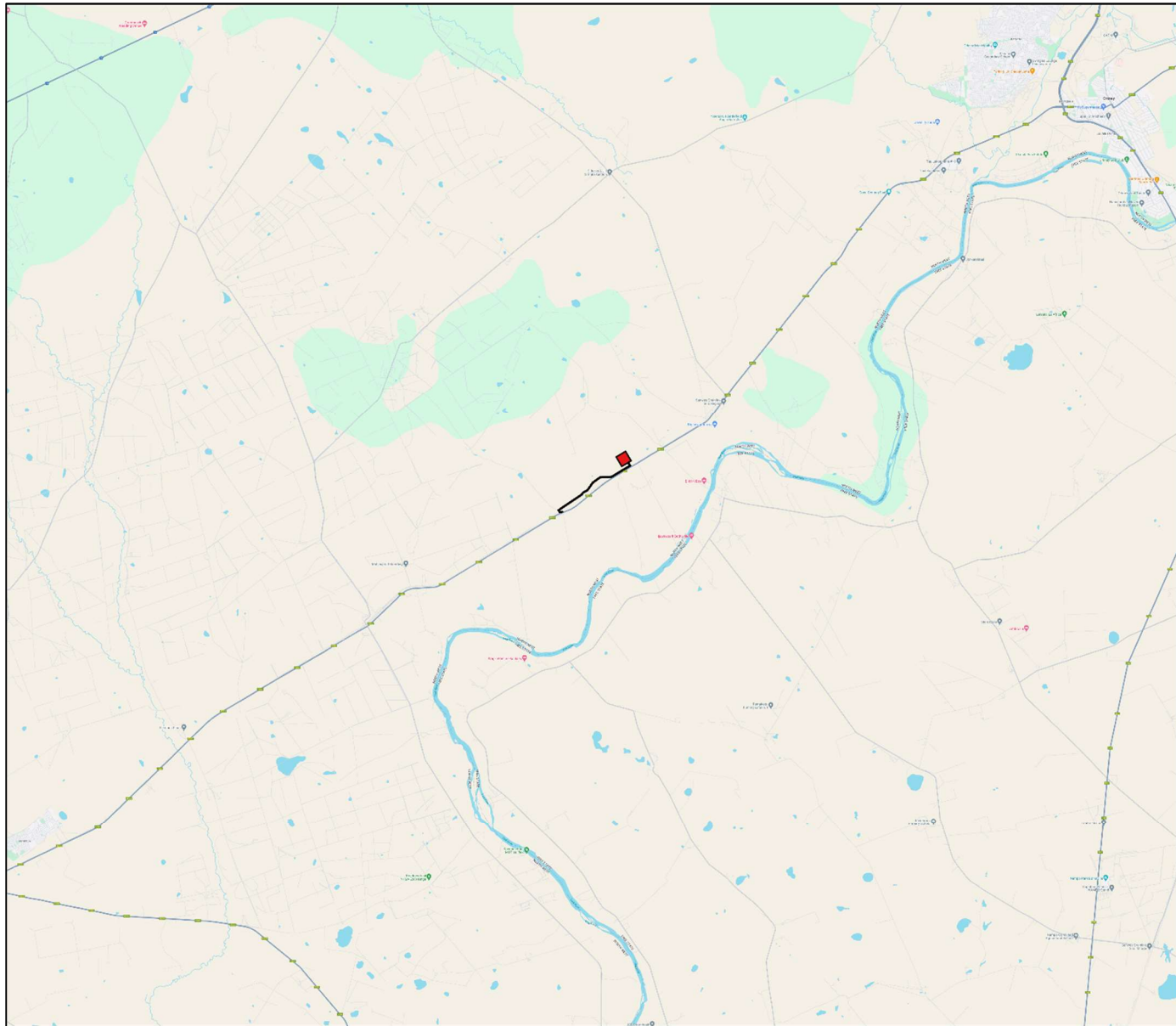
The EAP for the project can be contacted using the following details:

Table 6: EAP Contact Details

Contact name:	GIBB Environmental FAO: Mr Donovan Henning
Tel:	011 781 1730
Email (preferred method of communication):	donavanh@nemai.co.za and cc nbrink@gibbenvironmental.co.za
Address	GIBB Environmental 147 Bram Fischer Drive Ferndale, Randburg 2194

Registration requests must be emailed to GIBB Environmental using these contact details above. The registration form is included in **Appendix C**.

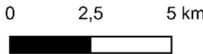
Appendix A. Locality Map and Layout Plan



**GE39192
Otter Main Transmission
Substation
Locality Map**



Scale 1:200 000



GIBB

ENVIRONMENTAL

Legend

Otter MTS Access Road



Otter MTS

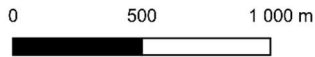




**GE39192
Otter Main Transmission
Substation
Layout Map**



Scale 1:25 000



Legend

Otter MTS Access Road



Otter MTS



Appendix B. Screening Tool Report

**SCREENING REPORT FOR AN ENVIRONMENTAL AUTHORIZATION AS
REQUIRED BY THE 2014 EIA REGULATIONS – PROPOSED SITE
ENVIRONMENTAL SENSITIVITY**

EIA Reference number: Pending

Project name: Otter Main Transmission Substation

Project title: Proposed Otter Main Transmission Substation (MTS) and auxiliary buildings

Date screening report generated: 24/01/2024 13:30:03

Applicant: ABO Wind renewable energies (Pty) Ltd

Compiler: Kate Flood

Compiler signature:



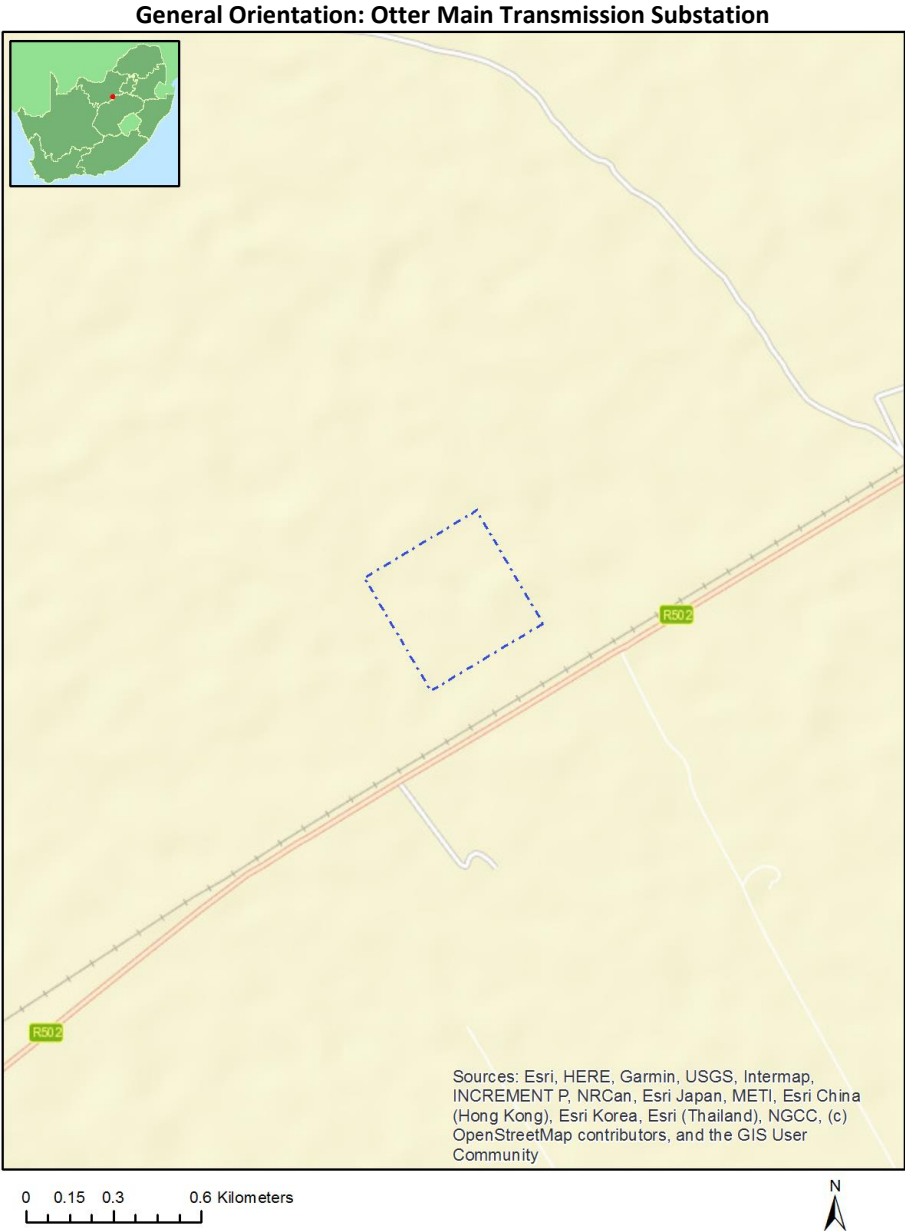
Application Category: Utilities Infrastructure | Electricity | Distribution and
Transmission | Substation

Table of Contents

- Proposed Project Location 3
 - Orientation map 1: General location 3
- Map of proposed site and relevant area(s) 4
 - Cadastral details of the proposed site 4
 - Wind and Solar developments with an approved Environmental Authorisation or applications under consideration within 30 km of the proposed area 4
 - Environmental Management Frameworks relevant to the application 5
- Environmental screening results and assessment outcomes 5
 - Relevant development incentives, restrictions, exclusions or prohibitions 5
 - Proposed Development Area Environmental Sensitivity 6
 - Specialist assessments identified 6
- Results of the environmental sensitivity of the proposed area 8
 - MAP OF RELATIVE AGRICULTURE THEME SENSITIVITY 8
 - MAP OF RELATIVE ANIMAL SPECIES THEME SENSITIVITY 9
 - MAP OF RELATIVE AQUATIC BIODIVERSITY THEME SENSITIVITY 10
 - MAP OF RELATIVE ARCHAEOLOGICAL AND CULTURAL HERITAGE THEME SENSITIVITY 11
 - MAP OF RELATIVE CIVIL AVIATION THEME SENSITIVITY 12
 - MAP OF RELATIVE DEFENCE THEME SENSITIVITY 13
 - MAP OF RELATIVE PALEONTOLOGY THEME SENSITIVITY 14
 - MAP OF RELATIVE PLANT SPECIES THEME SENSITIVITY 15
 - MAP OF RELATIVE TERRESTRIAL BIODIVERSITY THEME SENSITIVITY 16

Proposed Project Location

Orientation map 1: General location



Map of proposed site and relevant area(s)



Cadastral details of the proposed site

Property details:

No	Farm Name	Farm/ Erf No	Portion	Latitude	Longitude	Property Type
1	KLERKSDRIF	31	0	27°4'59.84S	26°29'9.61E	Farm
2	KLERKSDRIF	31	0	27°4'59.84S	26°29'9.61E	Farm Portion

Development footprint¹ vertices:

No development footprint(s) specified.

Wind and Solar developments with an approved Environmental Authorisation or applications under consideration within 30 km of the proposed area

No	EIA Reference No	Classification	Status of application	Distance from proposed area (km)
1	12/12/20/2513/2/AM1	Solar PV	Approved	25.3
2	14/12/16/3/3/1/2668	Solar PV	Approved	21.9
3	14/12/16/3/3/2/559/AM3	Solar PV	Approved	12.3
4	14/12/16/3/3/1/1519	Solar PV	Approved	12.3
5	14/12/16/3/3/1/2475	Solar PV	Approved	25.5
6	14/12/16/3/3/1/2691	Solar PV	Approved	16.2

¹ "development footprint", means the area within the site on which the development will take place and includes all ancillary developments for example roads, power lines, boundary walls, paving etc. which require vegetation clearance or which will be disturbed and for which the application has been submitted.

7	12/12/20/2513/4	Solar PV	Approved	25.3
8	14/12/16/3/3/1/2365	Solar PV	Approved	26
9	14/12/16/3/3/1/2667	Solar PV	Approved	21.8
10	14/12/16/3/3/1/2669	Solar PV	Approved	24.8
11	14/12/16/3/3/2/954	Solar PV	Approved	9.6
12	14/12/16/3/3/2/1/2369	Solar PV	Approved	27.8
13	14/12/16/3/3/1/2546	Solar PV	Approved	11
14	12/12/20/2513/3/AM6	Solar PV	Approved	25.3
15	14/12/16/3/3/2/559/AM2	Solar PV	Approved	12.3
16	12/12/20/2513/3/AM2	Solar PV	Approved	25.3
17	14/12/16/3/3/1/2369	Wind	Approved	27.8
18	12/12/20/2513/1/AM2	Solar PV	Approved	25.3
19	12/12/20/2513/3	Solar PV	Approved	25.3
20	14/12/16/3/3/2/954/AM1	Solar PV	Approved	9.6
21	14/12/16/3/3/1/2535	Solar PV	Approved	28.8
22	12/12/20/2513/1/AM1	Solar PV	Approved	25.3
23	12/12/20/2513/3/AM3	Solar PV	Approved	25.3
24	14/12/16/3/3/2/559/AM1	Solar PV	Approved	12.3
25	12/12/20/2513/1	Solar PV	Approved	25.3
26	14/12/16/3/3/1/2474	Solar PV	Approved	16.2
27	12/12/20/2513/2/AM5	Solar PV	Approved	25.3
28	14/12/16/3/3/1/2655	Solar PV	Approved	26
29	14/12/16/3/3/2/559/AM4	Solar PV	Approved	12.3
30	12/12/20/2513/3/AM1	Solar PV	Approved	25.3
31	14/12/16/3/3/1/1519/AM1	Solar PV	Approved	12.3
32	14/12/16/3/3/1/2591	Solar PV	Approved	26.5
33	12/12/20/2513/4/AM1	Solar PV	Approved	25.3
34	12/12/20/2513/1/AM3	Solar PV	Approved	25.3

Environmental Management Frameworks relevant to the application

No intersections with EMF areas found.

Environmental screening results and assessment outcomes

The following sections contain a summary of any development incentives, restrictions, exclusions or prohibitions that apply to the proposed development site as well as the most environmental sensitive features on the site based on the site sensitivity screening results for the application classification that was selected. The application classification selected for this report is:

Utilities Infrastructure | Electricity | Distribution and Transmission | Substation.

Relevant development incentives, restrictions, exclusions or prohibitions

The following development incentives, restrictions, exclusions or prohibitions and their implications that apply to this site are indicated below.

Incentive, restriction or prohibition	Implication
Strategic Transmission Corridor-Central corridor	https://screening.environment.gov.za/ScreeningDownloads/DevelopmentZones/Combined_EGI.pdf
Renewable energy development zones 10-Klerksdorp	https://screening.environment.gov.za/ScreeningDownloads/DevelopmentZones/Combined_REDZ.pdf

Main Electricity Distribution Substation	https://screening.environment.gov.za/ScreeningDownloads/DevelopmentZones/Distribution_Transmission.pdf
--	---

Proposed Development Area Environmental Sensitivity

The following summary of the development site environmental sensitivities is identified. Only the highest environmental sensitivity is indicated. The footprint environmental sensitivities for the proposed development footprint as identified, are indicative only and must be verified on site by a suitably qualified person before the specialist assessments identified below can be confirmed.

Theme	Very High sensitivity	High sensitivity	Medium sensitivity	Low sensitivity
Agriculture Theme			X	
Animal Species Theme				X
Aquatic Biodiversity Theme				X
Archaeological and Cultural Heritage Theme				X
Civil Aviation Theme				X
Defence Theme				X
Paleontology Theme			X	
Plant Species Theme			X	
Terrestrial Biodiversity Theme	X			

Specialist assessments identified

Based on the selected classification, and the known impacts associated with the proposed development, the following list of specialist assessments have been identified for inclusion in the assessment report. It is the responsibility of the EAP to confirm this list and to motivate in the assessment report, the reason for not including any of the identified specialist study including the provision of photographic evidence of the site situation.

No	Specialist assessment	Assessment Protocol
1	Agricultural Impact Assessment	https://screening.environment.gov.za/ScreeningDownloads/AssessmentProtocols/Gazetted_General_Agriculture_Assessment_Protocols.pdf
2	Archaeological and Cultural Heritage Impact Assessment	https://screening.environment.gov.za/ScreeningDownloads/AssessmentProtocols/Gazetted_General_Requirement_Assessment_Protocols.pdf
3	Palaeontology Impact Assessment	https://screening.environment.gov.za/ScreeningDownloads/AssessmentProtocols/Gazetted_General_Requirement_Assessment_Protocols.pdf
4	Terrestrial Biodiversity Impact Assessment	https://screening.environment.gov.za/ScreeningDownloads/AssessmentProtocols/Gazetted_Terrestrial_Biodiversity_Assessment_Protocols.pdf
5	Aquatic Biodiversity Impact Assessment	https://screening.environment.gov.za/ScreeningDownloads/AssessmentProtocols/Gazetted_Aquatic_Biodiversity_Assessment_Protocols.pdf
6	Geotechnical Assessment	https://screening.environment.gov.za/ScreeningDownloads/AssessmentProtocols/Gazetted_General_Requirement_Assessment_Protocols.pdf

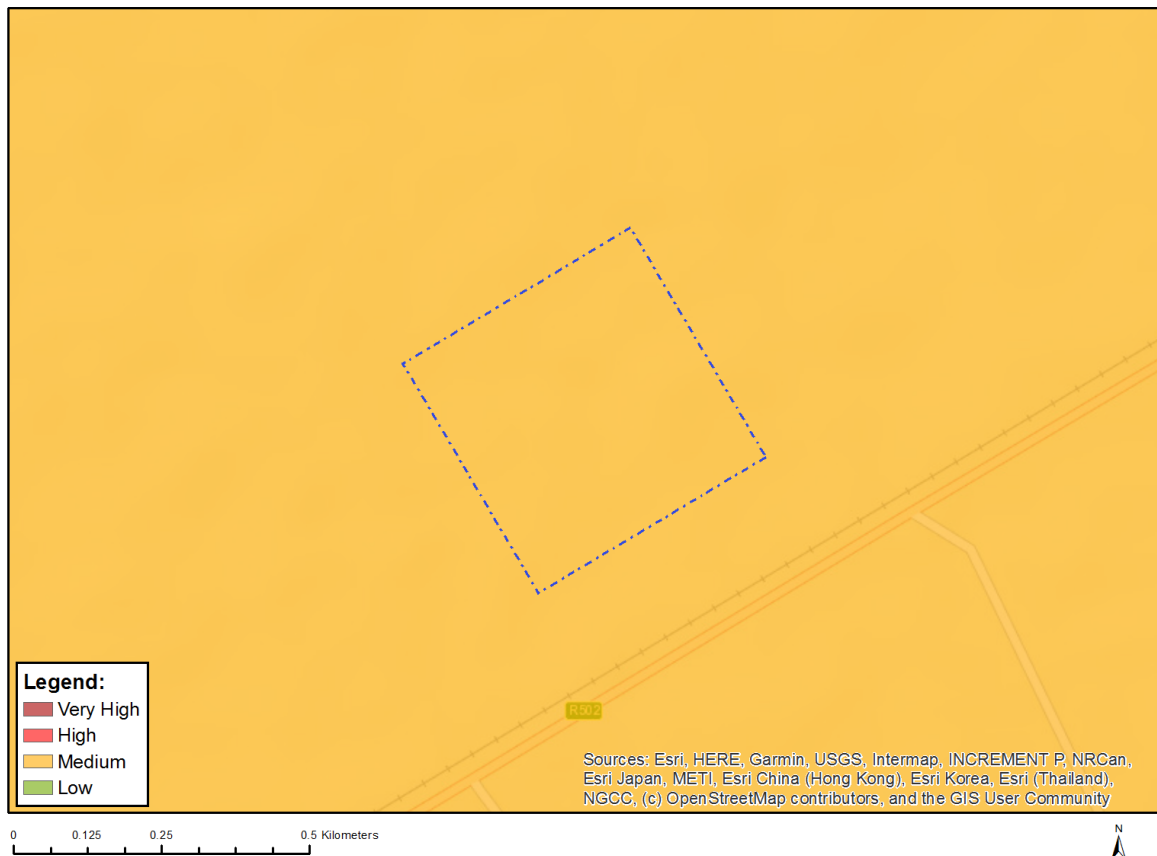
7	Plant Species Assessment	https://screening.environment.gov.za/ScreeningDownloads/AssessmentProtocols/Gazetted Plant Species Assessment Protocols.pdf
8	Animal Species Assessment	https://screening.environment.gov.za/ScreeningDownloads/AssessmentProtocols/Gazetted Animal Species Assessment Protocols.pdf

OFFICIAL

Results of the environmental sensitivity of the proposed area.

The following section represents the results of the screening for environmental sensitivity of the proposed site for relevant environmental themes associated with the project classification. It is the duty of the EAP to ensure that the environmental themes provided by the screening tool are comprehensive and complete for the project. Refer to the disclaimer.

MAP OF RELATIVE AGRICULTURE THEME SENSITIVITY

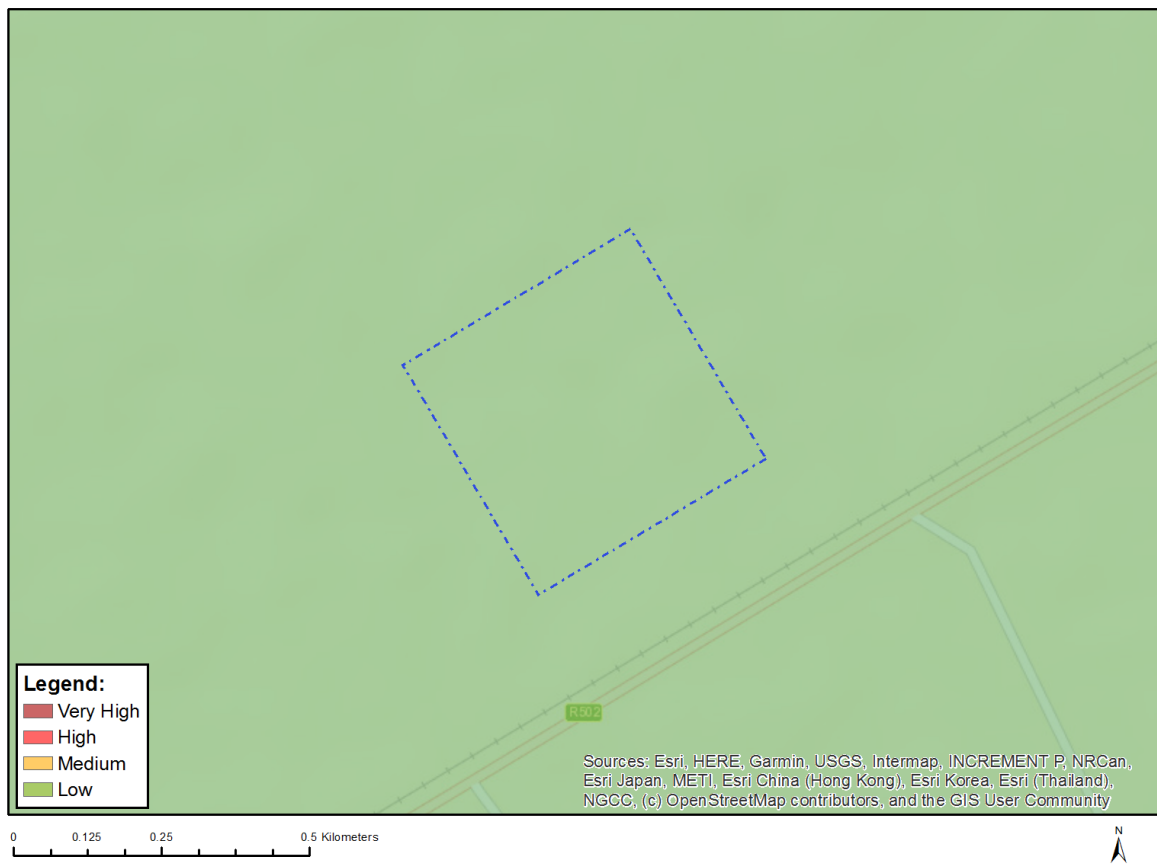


Very High sensitivity	High sensitivity	Medium sensitivity	Low sensitivity
		X	

Sensitivity Features:

Sensitivity	Feature(s)
Medium	Land capability;06. Low-Moderate/07. Low-Moderate/08. Moderate

MAP OF RELATIVE ANIMAL SPECIES THEME SENSITIVITY



Where only a sensitive plant unique number or sensitive animal unique number is provided in the screening report and an assessment is required, the environmental assessment practitioner (EAP) or specialist is required to email SANBI at eiadatarequests@sanbi.org.za listing all sensitive species with their unique identifiers for which information is required. The name has been withheld as the species may be prone to illegal harvesting and must be protected. SANBI will release the actual species name after the details of the EAP or specialist have been documented.

Very High sensitivity	High sensitivity	Medium sensitivity	Low sensitivity
			X

Sensitivity Features:

Sensitivity	Feature(s)
Low	Subject to confirmation

MAP OF RELATIVE AQUATIC BIODIVERSITY THEME SENSITIVITY

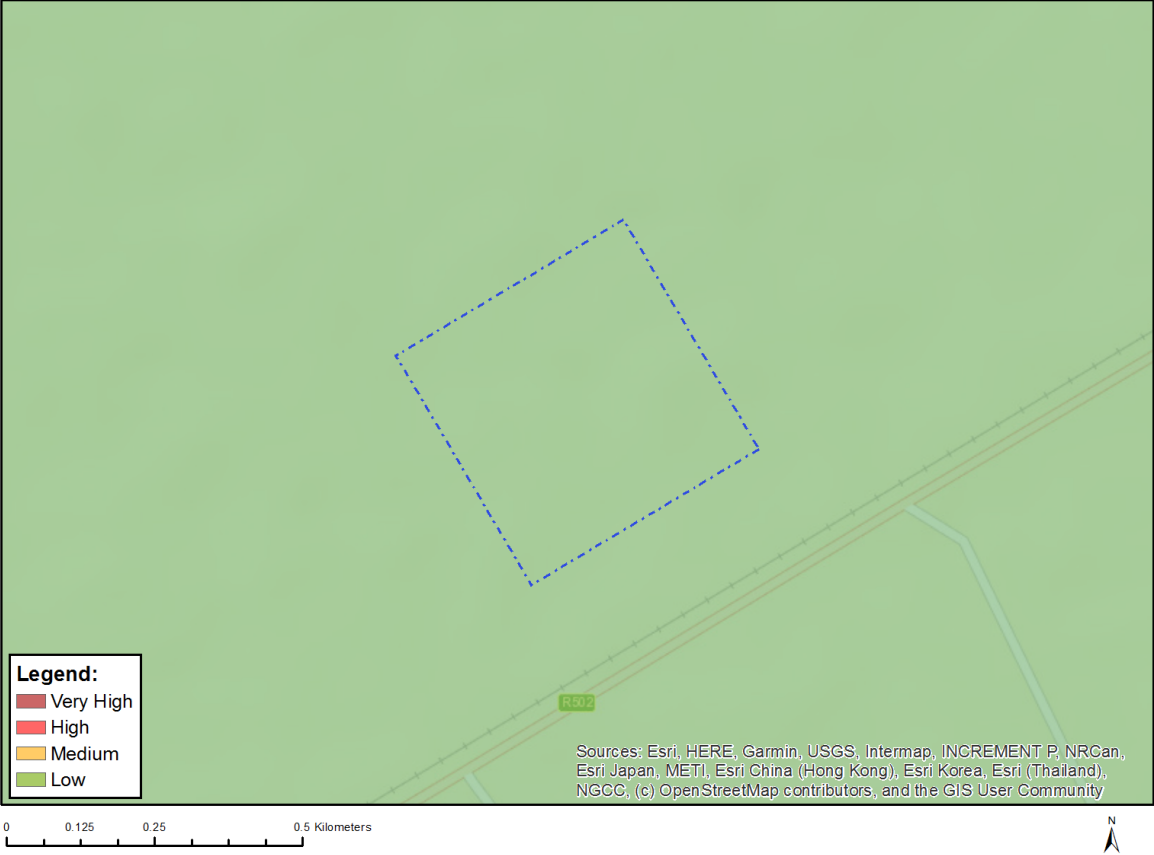


Very High sensitivity	High sensitivity	Medium sensitivity	Low sensitivity
			X

Sensitivity Features:

Sensitivity	Feature(s)
Low	Low sensitivity

MAP OF RELATIVE ARCHAEOLOGICAL AND CULTURAL HERITAGE THEME SENSITIVITY



Very High sensitivity	High sensitivity	Medium sensitivity	Low sensitivity
			X

Sensitivity Features:

Sensitivity	Feature(s)
Low	Low sensitivity

MAP OF RELATIVE CIVIL AVIATION THEME SENSITIVITY



Very High sensitivity	High sensitivity	Medium sensitivity	Low sensitivity
			X

Sensitivity Features:

Sensitivity	Feature(s)
Low	Low sensitivity

MAP OF RELATIVE DEFENCE THEME SENSITIVITY

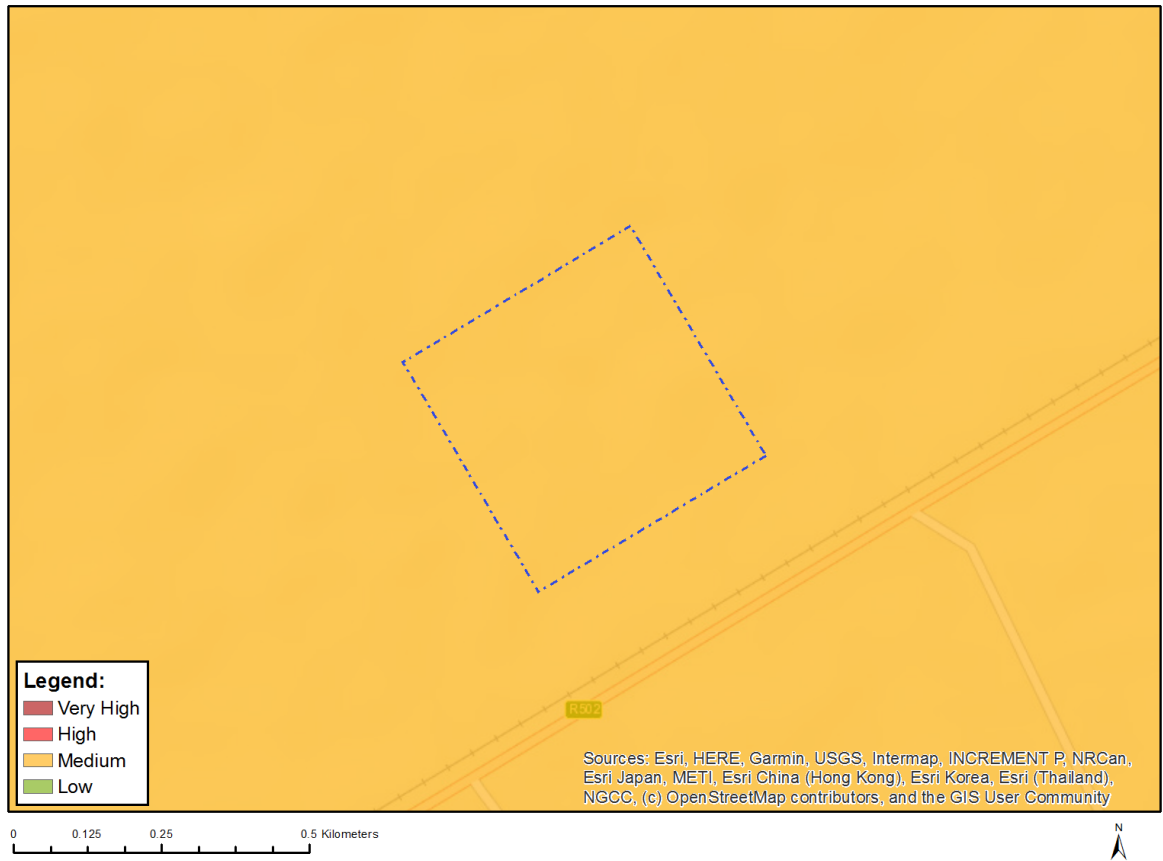


Very High sensitivity	High sensitivity	Medium sensitivity	Low sensitivity
			X

Sensitivity Features:

Sensitivity	Feature(s)
Low	Low Sensitivity

MAP OF RELATIVE PALEONTOLOGY THEME SENSITIVITY

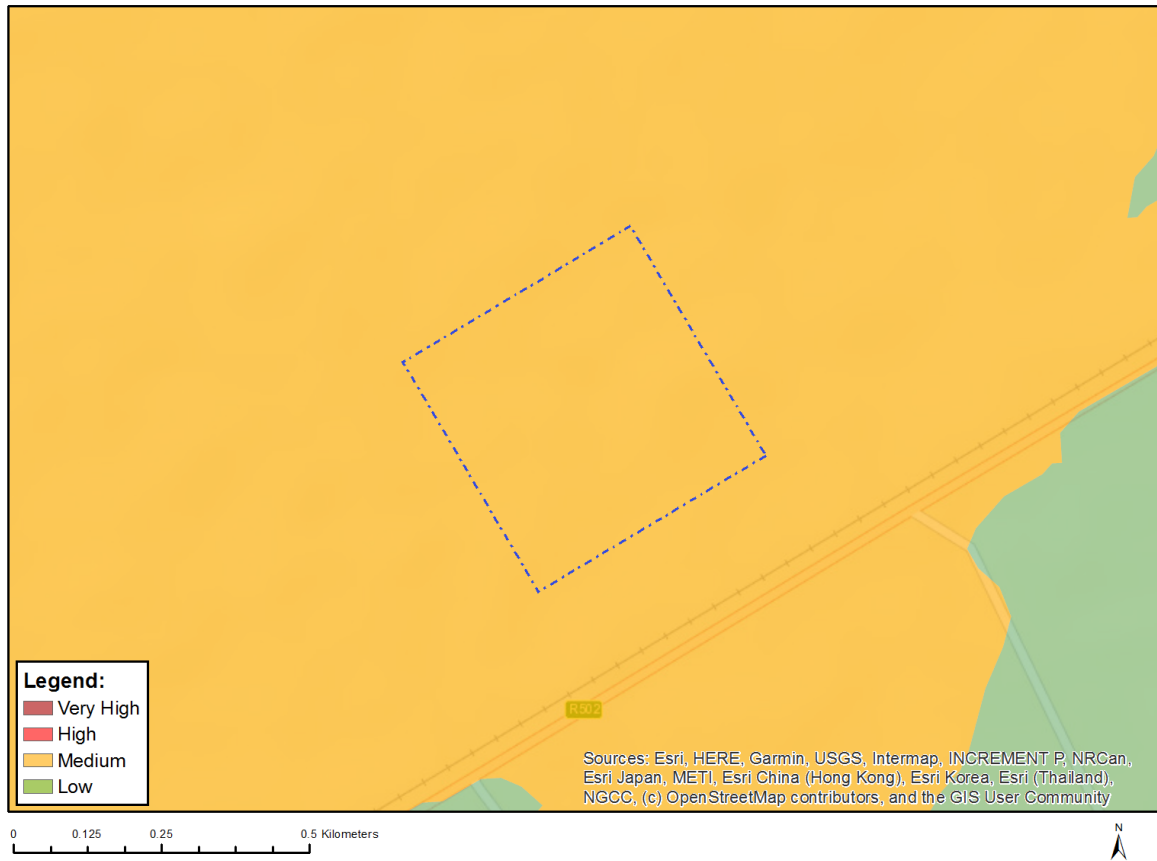


Very High sensitivity	High sensitivity	Medium sensitivity	Low sensitivity
		X	

Sensitivity Features:

Sensitivity	Feature(s)
Low	Features with a Low paleontological sensitivity
Medium	Features with a Medium paleontological sensitivity

MAP OF RELATIVE PLANT SPECIES THEME SENSITIVITY



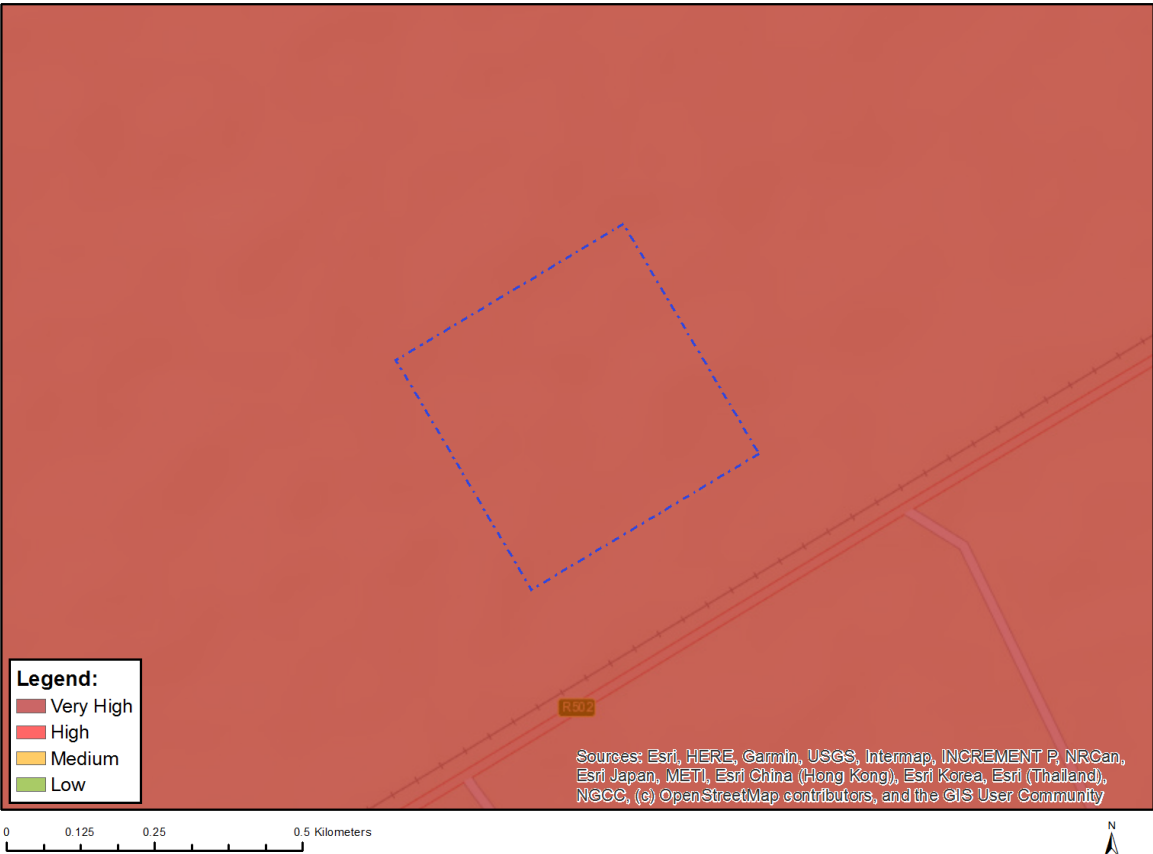
Where only a sensitive plant unique number or sensitive animal unique number is provided in the screening report and an assessment is required, the environmental assessment practitioner (EAP) or specialist is required to email SANBI at eiadatarequests@sanbi.org.za listing all sensitive species with their unique identifiers for which information is required. The name has been withheld as the species may be prone to illegal harvesting and must be protected. SANBI will release the actual species name after the details of the EAP or specialist have been documented.

Very High sensitivity	High sensitivity	Medium sensitivity	Low sensitivity
		X	

Sensitivity Features:

Sensitivity	Feature(s)
Low	Low Sensitivity
Medium	Sensitive species 1261

MAP OF RELATIVE TERRESTRIAL BIODIVERSITY THEME SENSITIVITY



Very High sensitivity	High sensitivity	Medium sensitivity	Low sensitivity
X			

Sensitivity Features:

Sensitivity	Feature(s)
Very High	EN_Vaal-Vet Sandy Grassland

Appendix C. I&AP Registration Form



INTERESTED AND AFFECTED PARTY REGISTRATION FORM

Name	
Organisation	
Telephone Number	
Physical Address	
Postal Address	
Fax No.	
Email address	

Please state your interest (i.e. direct business, financial, personal or other interest) with respect to the approval or refusal of the registration of the proposed Otter MTS Grid Connection application.

Please state any concerns, suggestions and/or potential impacts that should be considered during the Grid Connection Application Process.

I&AP registrations and comments to be submitted to GIBB Environmental using the details below:

Attention: Mr Donovan Henning

Email: donavanh@nema.co.za

cc: nbrink@gibbenvironmental.co.za



The Office of GIBB Environmental is open during office hours Monday to Friday, excluding Public holidays.